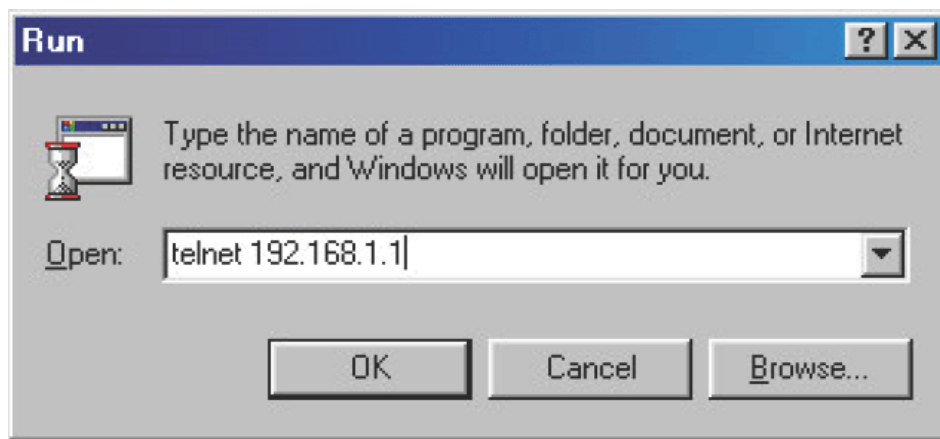


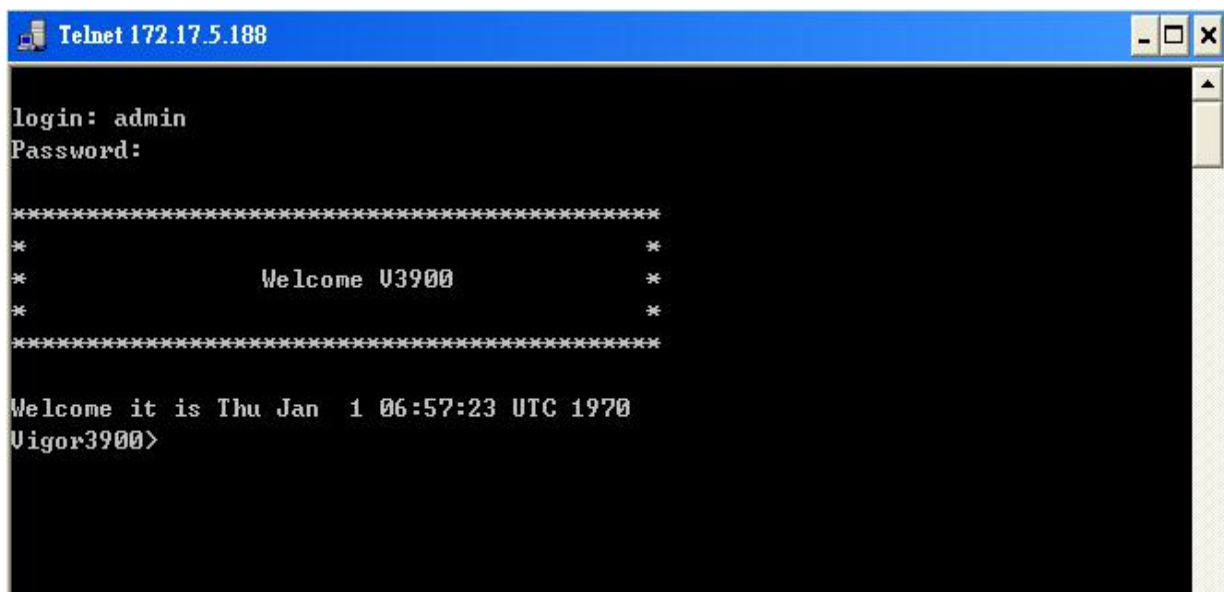
# 1. Introduction

## 1.1 Accessing Telnet

Click Start > Run and type **Telnet 192.168.1.1** in the Open box as below. Note that the IP address in the example is the default address of the router. If you have changed the default, enter the current IP address of the router.



Click OK. The Telnet terminal will be open. The screen will show [login]. Type a valid administrator name and press Enter. And then show [Password], type the password for this administrator and press Enter will appear following screen.



## 1.2 System Commands Overview

### 1.2.1 User mode

When the screen appears the Vigor3900>, You have connected to the Vigor3900 CLI and you can enter CLI commands to configure. Under Vigor3900>, only the vigor 3900 global command listed below could be used.

## Vigor 3900 Global Command

Command	DESCRIPTION
apply	Apply setting
enable	Change to enable mode
help	Display an overview of the CLI syntax
history	Display the current session's command line history
logout	Logout of the current CLI session
ping	Send ICMP ECHO_REQUEST packets to network host
status	Get current system related status
tracert	Print the route packets trace to network host
wd_off	Close watch dog, ps: watch dog is running in default after reboot
exit	Exit

### 1.apply **[config]**

When you modify the configure , create,delete,edit,You have to type this command to save the equipment of set.

### 2.Enable

Change to enable mode

Example:

Vigor3900> status

Vigor3900> enable

Vigor3900# configure [command]==>enable mode

### 3.help

CONTEXT SENSITIVE HELP	
[?]	Display context sensitive help. This is either a list of possible command completions with summaries, or the full syntax of the current command. A subsequent repeat of this key, when a command has been resolved, will display a detailed reference.
<b>AUTO-COMPLETION</b> The following keys both perform auto-completion for the current command line. If the command prefix is not unique then the bell will ring and a subsequent repeat of the key will display possible completions.	
[enter]	Auto-completes, syntax-checks then executes a command. If there is a syntax error then offending part of the command line will be
[space]	Auto-completes, or if the command is already resolved inserts a space.
<b>MOVEMENT KEYS</b>	
[CTRL-A]	Move to the start of the line
[CTRL-E]	Move to the end of the line.
[up]	Move to the previous command line held in history.

[down]	Move to the next command line held in history.
[left]	Move the insertion point left one character.
[right]	Move the insertion point right one character.
DELETION KEYS	
[CTRL-C]	Delete and abort the current line
[CTRL-D]	Delete the character to the right on the insertion point.
[CTRL-K]	Delete all the characters to the right of the insertion point.
[CTRL-U]	Delete the whole line.
[backspace]	Delete the character to the left of the insertion point.
ESCAPE SEQUENCES	
!!	Substitute the the last command line
!N	Substitute the Nth command line (absolute as per 'history' command)
!-N	Substitute the command line entered N lines before (relative)

#### 4.ping [host] [src\_if]

Send ICMP ECHO\_REQUEST packets to network host

[host] Target host [ ]

[src\_if] Source Interface [unspecified]

#### 5.status [command]

Get the following list system related status.

Command	DESCRIPTION
arp	Get current ARP status
conn_num	Get conntrack number
conntrack	Get conntrack session
dhcp	Get DHCP active session
firewall	Get current firewall config and status
lan	Get current lan status
lut	Get current switch lookup table info
neighbor6	Get current IPv6 neighbor table
process	Get current process status
route	Get current route table
route6	Get current IPv6 route table
switch	Get current switch status
system	Get current system status
vpn	Get current vpn status
wan	Get current wan status

Note1:Type .. to go back to upper layer menu  
Type exit to go back to main menu

### 1.2.2 enable mode

Key in “enable” command to enter enable mode. Now, you could use “configure” command to set Vigor3900. At the same time, the vigor 3900 global commands are also valid. Refer to the following chapters for descriptions of commonly used commands.

#### example

**Vigor3900>** status ---->user mode

**Vigor3900>** enable

**Vigor3900#** configure [command] ----->enable mode

### Vigor 3900 configure Command

Command	DESCRIPTION
applications	Configure applications
bandwidth	Configure bandwidth management
fw	Configure firewall service
nat	Configure NAT
object_setting	Configure firewall object setting
system	Configure system management
terminal	Configure terminal
user	Configure user management
vpn	Configure VPN

Note: type ? Will display a list of possible command completions with summaries,

## 2.WAN

Vigor3900 provides four functions in WAN – General Setup, Default Route, Load Balance(include load balancer pool, rule and auto load balance for china) , Switch. Users could use the commands below to set up the details.

Function Command	DESCRIPTION
autolb	auto load balance for china
defaultroute	default route
lbpool	configure load balancer pool
lbrule	configure load balancer rule
pf	Configure profile on wan
switch	Configure interface

```
Vigor3900# configure terminal
Vigor3900@config-t# wan
Vigor3900@config-t-wan# <command>
```

### 2.1 General Setup

Vigor3900 supports multi-WAN function. It allows users to access Internet and combine the bandwidth of the WAN profiles to speed up the transmission through the network. Each WAN port can connect to different ISPs, even if the ISPs use different technology to provide telecommunication service (such as DSL, Cable modem, etc.). If any connection problem occurred on one of the ISP connections, all the traffic will be guided and switched to the normal communication port for proper operation.

In **Vigor3900@config-t-wan#** , users could use [pf] command to configure WAN Profile to add or delete the profile or use “show” to get the profile list in the directory. Enter the profile name to open it and modify the profile directly.

Command	DESCRIPTION
pf add <SectionName>	Add profile on wan
pf delete <SectionName>	Delete profile on wan
pf show	Get configuration on wan
pf <profileName>	Modify the selected profile

#### example-

```
Vigor3900@config-t-wan# pf add <SectionName>
Vigor3900@config-t-wan# pf delete <SectionName>
Vigor3900@config-t-wan# pf show
Vigor3900@config-t-wan# pf <SectionName>
```

When you selected the profile or create a new profile, could use the commands below to set up the details.

Command	DESCRIPTION
..	Go back to upper layer menu
exit	Go back to config-t-wan menu
cdhost	Add or remove connection detection hosts to this profile
connect	DHCP/PPPoE/PPTP connect
disconnect	DHCP/PPPoE/PPTP disconnect
dns	Add or remove more DNS to this profile
dns6	Add or remove more ipv6 DNS to this profile
get	get configuration on this profile
ipalias	Add or remove IP alias to this profile
set	Configure profile

**Vigor3900@config-t-wan# pf <SectionName>**  
**Vigor3900@config-t-wan-pf<SectionName>#**

### 2.1.1 Cdhost

In **Vigor3900@config-t-wan-pf<SectionName>#** , users could use [cdhost] command to configure this profile's connection detection hosts of this profile. Choose the [dhcp] or [static] item and use [add] or [remove] to set the profile.

function	Item	Command	DESCRIPTION
<b>Cdhost</b>	dhcp	[add] [remove]	Add or remove DHCP connection detection hosts to this profile
	static	[add] [remove]	Add or remove static connection detection hosts to this profile

#### example

**Vigor3900@config-t-wan# pf <profilename>**  
**Vigor3900@config-t-wan-pf-<profilename># Cdhost dhcp add <profilename>**  
**Vigor3900@config-t-wan-pf-<profilename># Cdhost static remove <profilename>**

### 2.1.2 connect/ disconnect

In **Vigor3900@config-t-wan-pf-<SectionName>#** , use the [connect] or [disconnect] command to set the DHCP/PPPoE/PPTP connect ion or disconnection

#### example-

**Vigor3900@config-t-wan# pf <profilename>**  
**Vigor3900@config-t-wan-pf-<profilename># connect [dhcp][pppoe][pptp]**  
**Vigor3900@config-t-wan-pf-<profilename># disconnect [dhcp][pppoe][pptp]**

### 2.1.3 dns

In **Vigor3900@config-t-wan-pf<SectionName>#** , use the [dns] command to configure the DNS server to add or remove DNS server.

**\*\*[add]** Add dns server  
**\*\*[remove]** Remove dns server

#### example-

**Vigor3900@config-t-wan-pf-<profilename>#** dns add <IP address>

**Vigor3900@config-t-wan-pf-<profilename>#** dns remove <IP address>

#### 2.1.4 dns6

In **Vigor3900@config-t-wan-pf-<SectionName>#** , users could use [dns6] command to configure the ipv6 DNS profile. Choose the [dhcp6-ia\_na] or [static6] item and use [add] or [remove] to set this profile.

function	Item	Command	DESCRIPTION
<b>dns6</b>	dhcp6-ia_na	[add] [remove]	Add or remove more ipv6 DNS to this profile
	static6	[add] [remove]	Add or remove more ipv6 DNS to this profile

#### example-

**Vigor3900@config-t-wan#** pf <profilename>

**Vigor3900@config-t-wan-pf-<profilename>#** dns dhcp6-ia\_na add <IP address>

**Vigor3900@config-t-wan-pf-<profilename>#** dns static6 remove <IP address>

#### 2.1.5 ipalias

In **Vigor3900@config-t-wan-pf-<SectionName>#** , users could use [ipalias] command to configure the IP alias address. Choose the [dhcp] or [static] item and use [add] or [remove] to set this profile.

function	Item	Command	DESCRIPTION
<b>ipalias</b>	dhcp	[add] [remove]	Add or remove DHCP IP alias address to this profile
	static	[add] [remove]	Add or remove static IP alias address to this profile

#### example-add

**Vigor3900@config-t-wan#** pf <profilename>

**Vigor3900@config-t-wan-pf-<profilename>#** ipalias dhcp remove <IP address>

**Vigor3900@config-t-wan-pf-<profilename>#** ipalias static add <IP address>

#### 2.1.6 get configuration information

In **Vigor3900@config-t-wan-pf-<SectionName>#**,user could use [get] and the commands below list to get configuration of the profile.

Command	DESCRIPTION
dhcp	get DHCP configuration

dhcp6-ia_na	get IPv6 dhcp(ia_na) configuration
global	get global configuration
pppoe	get PPPoE configuration
pptp	get PPTP configuration
static	get static configuration
static6	get IPv6 static configuration

#### example-

**Vigor3900@config-t-wan-pf-<SectionName>#** get dhcp

```
Vigor3900@config-t-wan-pf-wan1# get dhcp
ipaddr      :
mask        :
hostname    :
ipalias     :
mtu         : 1500
cdmode      : ARP
cdhost      :
cdint       : 10
cdretry     : 3
```

**Vigor3900@config-t-wan-pf-<SectionName>#** get static

```
Vigor3900@config-t-wan-pf-wan1# get static
ipaddr      : 172.17.5.188
mask        : 255.255.255.0
gateway     :
dns         :
ipalias     : 172.17.3.188/24
mtu         : 1500
cdmode      : ARP
cdhost      :
cdint       : 10
cdretry     : 3
```

### 2.1.7 set configuration information

In **Vigor3900@config-t-wan-pf-<SectionName>#**,user could use [set] and the commands below list to configure profiles.

Command	DESCRIPTION
dhcp	Profile DHCP configuration
dhcp6-ia_na	Profile IPv6 dhcp(ia_na) configuration
global	Profile global configuration
pppoe	Profile PPPoE configuration
pptp	Profile PPTP configuration
static	Profile static configuration



static6	Profile IPv6 static configuration
---------	-----------------------------------

### **2.1.7.1 Profile dhcp configuration**

In **Vigor3900@config-t-wan-pf-<SectionName>#**, users could use [set dhcp] command to configure the dhcp profile configuration, and use the commands below to set up the details.

**Vigor3900@config-t-wan-pf-<SectionName># set dhcp <command><Value>**

function	command	Value	DESCRIPTION
dhcp	ipaddr	dhcp_ipaddress	DHCP IP address
	mask	dhcp_netmask	DHCP mask address
	hostname	dhcp_hostname	DHCP hostname
	ipalias	dhcp_ipalias	DHCP IP alias address
	mtu	dhcp_mtu	DHCP mtu/mru value (max: 1500)
	cdmode	dhcp_cd_mode	DHCP connection detection mode (ARP/PING/HTTP)
	cdhost	dhcp_cd_host	DHCP connection detection host
	cdint	dhcp_cd_interval	DHCP connection detection interval
	cdretry	dhcp_cd_retry	DHCP connection detection retry

**Note:**The value could reference the description below.

**example-**

**Vigor3900@config-t-wan-pf-<SectionName># set dhcp ipaddr <DHCP IP address>**

**Vigor3900@config-t-wan-pf-<SectionName># set dhcp mask <DHCP mask address>**

**Vigor3900@config-t-wan-pf-<SectionName># set dhcp cdmode <ARP/PING/HTTP>**

### **2.1.7.2 Profile ipv6 dhcp(ia\_na) configuration**

In **Vigor3900@config-t-wan-pf-<SectionName>#**, users could use [set dhcp6-ia\_na] command to configure the ipv6 dhcp(ia\_na) profile configuration, and use the commands below to set up the details.

**Vigor3900@config-t-wan-pf-<SectionName># set dhcp6-ia\_na <command><Value>**

function	Command	Value	DESCRIPTION
dhcp6-ia_na	gateway6	dhcp6_na_gateway6	dhcp6(ia_na) gateway address
	dns6	dhcp6_na_dns6	dhcp6(ia_na) DNS address

**Note:**The value could reference the description below.

**example-**

**Vigor3900@config-t-wan-pf-<SectionName># set dhcp6-ia\_na gateway6 <gateway address>**

**Vigor3900@config-t-wan-pf-<SectionName># set dhcp6-ia\_na dns6 <DNS address>**

### **2.1.7.3 Profile global configuration**

In **Vigor3900@config-t-wan-pf-<SectionName>#**, users could use [set global] command to configure the global profile configuration, and use the commands below to set up the details.

**Vigor3900@config-t-wan-pf-<SectionName># set global <command><Value>**

function	Command	Value	DESCRIPTION
global	status	status	status (Enable/Disable)
	desc	description	profile description
	vid	vid	vlan id
	default_mac	default_mac	default mac (Enable/Disable)
	mac	macaddr	MAC address
	proto	proto	IPv4 protocol type (Static/DHCP/PPPoE/PPTP)
	proto6	proto6	ipv6 protocol type (Link-Local/ Static/DHCP-IA_NA/DHCP-IA_PD)

**Note:**The value could reference the description below.

**example-**

**Vigor3900@config-t-wan-pf-<SectionName># set global status <enable/disable>**

**Vigor3900@config-t-wan-pf-<SectionName># set global vid <number>**

### **2.1.7.4 Profile pppoe configuration**

In **Vigor3900@config-t-wan-pf-<SectionName>#**, users could use [set pppoe] command to configure the pppoe profile configuration, and use the commands below to set up the details.

**Vigor3900@config-t-wan-pf-<SectionName># set pppoe <command><Value>**

function	Command	Value	DESCRIPTION
pppoe	username	pppoe_username	PPPoE username
	password	pppoe_password	PPPoE password
	mtu	pppoe_mtu	PPPoE mtu/mru value (max: 1492)
	debug	pppoe_debug	enable PPPoE debug (Enable/Disable)
	always_on	pppoe_always_on	enable PPPoE always on (Enable/Disable)
	cdint	pppoe_cd_interval	PPPoE connection detection interval
	cdretry	pppoe_cd_retry	PPPoE connection detection retry
	ipalias	pppoe_ipalias	PPPoE IP alias address

**Note:**The value could reference the description below.

**example-**

**Vigor3900@config-t-wan-pf-<SectionName># set pppoe username <name>**

**Vigor3900@config-t-wan-pf-<SectionName># set pppoe debug <enable/disable>**

#### **2.1.7.5 Profile pptp configuration**

In **Vigor3900@config-t-wan-pf-<SectionName>#**, users could use [set pptp] command to configure the pptp profile configuration, and use the commands below to set up the details.

**Vigor3900@config-t-wan-pf-<SectionName># set pptp <command><Value>**

function	Command	Value	DESCRIPTION
pptp	over	pptp_over	PPTP over protocol (Static/DHCP)
	server	pptp_server	PPTP server
	username	pptp_username	PPTP username
	password	pptp_password	PPTP password
	mtu	pptp_mtu	PPTP mtu/mru value (max: 1460)
	debug	pptp_debug	enable PPTP debug (Enable/Disable)
	always_on	pptp_always_on	enable PPTP always on (Enable/Disable)
	cdint	pptp_cd_interval	PPTP connection detection interval
	cdretry	pptp_cd_retry	PPTP connection detection retry

**Note:**The value could reference the description below.

**example-**

**Vigor3900@config-t-wan-pf-<SectionName># set pptp over <dhcp/static>**

**Vigor3900@config-t-wan-pf-<SectionName># set pptp always\_on <enable/disable>**

#### **2.1.7.6 Profile static configuration**

In **Vigor3900@config-t-wan-pf-<SectionName>#**, users could use [set static] command to configure the static profile configuration, and use the commands below to set up the details.

**Vigor3900@config-t-wan-pf-<SectionName># set static <command><Value>**

function	Command	Value	DESCRIPTION
static	ipaddr	static_ipaddress	static IP address
	mask	static_mask	static mask address
	gateway	static_gateway	static gateway address
	dns	static_dns	static DNS address
	ipalias	static_ipalias	Static IP alias address
	mtu	static_mtu	static mtu/mru value
	cdmode	static_cd_mode	static connection detection mode (ARP/PING/HTTP)

	cdhost	static_cd_host	static connection detection host
	cdint	static_cd_interval	static connection detection interval
	cdretry	static_cd_retry	static connection detection retry

**Note:**The value could reference the description below.

**example-**

**Vigor3900@config-t-wan-pf-<SectionName>#** set static ipaddr <static ip address>

**Vigor3900@config-t-wan-pf-<SectionName>#** set static cdint <Unsigned integer>

#### **2.1.7.7 Profile static6 configuration**

In **Vigor3900@config-t-wan-pf-<SectionName>#** ,users could use [set static6] command to configure the static6 profile configuration, and use the commands below to set up the details.

**Vigor3900@config-t-wan-pf-<SectionName>#** set static6 <command><Value>

Function	Command	Value	DESCRIPTION
static6	ip6addr	static_ip6address	static IPv6 address
	ip6length	static_ip6length	static IPv6 prefix length
	gateway6	static_gateway6	static IPv6 gateway address
	dns6	static_dns6	static IPv6 DNS address

**Note:**The value could reference the description below.

**example-**

**Vigor3900@config-t-wan-pf-<SectionName>#** set static6 ip6addr <static ipv6 address>

**Vigor3900@config-t-wan-pf-<SectionName>#** set static6 dns6 <static ipv6 DNS address>

## **2.2 Default Route**

In **Vigor3900@config-t-wan#** , use [defaultroute] command to configure Default Route profile ,then type the [get] or [set] command to configure the Default Route profile details information.

**\*\*[get]** get default route

**\*\*[set]** configure default route

**example-**

**Vigor3900@config-t-wan#** defaultroute get

```
Vigor3900@config-t-wan# defaultroute get
pool                : wan1
```

**Vigor3900@config-t-wan#** defaultroute set [pool lb\_pool]

**Note:** [pool lb\_pool] the former pool is command, and the latter is value. The value

is wan profile/load balance pool.

## 2.3 Load Balance

### 2.3.1 Load Balancer Pool

In **Vigor3900@config-nat#** , users could use [lbpool ] command to configure Load Balance Pool to add or delete the profile or use “show” to get the profile list in the directory. Enter the profile name to open it and modify the profile directly.

Command	DESCRIPTION
lbpool add <SectionName>	add load balancer pool
lbpool delete <SectionName>	delete load balancer pool
lbpool show	get load balancer pool
lbpool <SectionName>	Modify the selected profile

selected the profile, then use the [get] , [set] command to configure the load balancer pool configuration, use the [add],[remove] command to add or remove the load balancer loadbalance interface.

\*\*[get] get load balancer pool configuration

\*\*[set] set load balancer pool configuration

**Vigor3900@config-t-wan-lb-pool-<ProfileName>#** get

**Vigor3900@config-t-wan-lb-pool-<ProfileName>#** set [mode mode] [lbif lb\_iface]  
[primary primary\_pf] [backup backup\_pf]

Command	Value	DESCRIPTION
mode	mode	load balance mode (Load_Balance/Failover)
lbif	lb_iface	load balance interface
primary	primary_pf	primary profile
backup	backup_pf	backup profile

**Note:** [mode mode] the former mode is command, and the latter is value. The value could reference the description below.

-----  
\*\*[add] add load balancer loadbalance interface

\*\*[remove] remove load balancer pool loadbalance interface

Command	Value	DESCRIPTION
add	lb_iface	load balance interface
	lb_iface_weight	load balance interface weight
remove lbif	lb_iface	load balance interface
	lb_iface_weight	load balance interface weight

**Vigor3900@config-t-wan-lb-pool-<ProfileName>#** add <lb\_iface>

**Vigor3900@config-t-wan-lb-pool-<ProfileName>#** add <lb\_iface\_weight>

```
Vigor3900@config-t-wan-lb-pool-<ProfileName># remove bif <lb_iface>
Vigor3900@config-t-wan-lb-pool-<ProfileName># remove <lb_iface_weight>
```

---

#### example-create

```
Vigor3900@config-t-wan# lbpool add <SectionName>
Vigor3900@config-t-wan-lb-pool-<ProfileName># set mode <load balance mode>
Vigor3900@config-t-wan-lb-pool-<ProfileName># set primary <primary profile>
Vigor3900@config-t-wan-lb-pool-<ProfileName># add <WAN profile configuration>
```

#### example-edit

```
Vigor3900@config-t-wan# lbpool show
Vigor3900@config-t-wan# lbpool <SectionName>
Vigor3900@config-t-wan-lb-pool-<ProfileName># get
```

```
Vigor3900@config-t-wan-lb-pool-p2# get
mode                : Load_Balance
lbif                 :
primary              : wan1
backup               : wan1
```

```
Vigor3900@config-t-wan-lb-pool-<ProfileName>#set backup <backup profile>
Vigor3900@config-t-wan-lb-pool-<ProfileName>#remove lbif <load balance interface>
```

#### example-delete

```
Vigor3900@config-t-wan# lbpool delete <SectionName>
```

### 2.3.2 Load Balancer Rule

In **Vigor3900@config-nat#** , users could use [lbrule] command to configure Load Balance Rule to add or delete the profile or use “show” to get the profile list in the directory. Enter the profile name to open it and modify the profile directly.

Command	DESCRIPTION
lbrule add <profileName>	add load balancer rule
lbrule delete <profileName>	delete load balancer rule
lbrule show	get load balancer rule
lbrule <profileName>	Modify the selected profile

selected the profile, then use the [get] , [set] command to configure the load balancer rule configuration,

```
**[get] get load balancer rule configuration
**[set] set load balancer rule configuration
```

#### example-add:

```
Vigor3900@config-t-wan# lbrule add <profilename>
Vigor3900@config-t-wan-lb-rule-<profilename># set <command Value>
```

#### example-edit:

```
Vigor3900@config-t-wan# lbrule show
Vigor3900@config-t-wan# lbrule <profilename>
```

**Vigor3900@config-t-wan-lb-rule-<profilename># get**

```
Vigor3900@config-t-wan-lb-rule-p1# get
status          : Enable
proto           : ALL
sip             :
smask           :
dip             :
dmask           :
dport           :
dport_end       :
pool            : wan5
```

Vigor3900@config-t-wan-lb-rule-<profilename># set [status status] [proto protocol] [sip src\_ip] [smask src\_mask] [dip dest\_ip] [dmask dest\_mask] [dport dest\_port] [dport\_end dest\_port\_end] [pool lb\_pool]

Command	Value	DESCRIPTION
status	status	status (Enable/Disable)
proto	protocol	protocol (ALL/TCP/UDP/TCP/UDP/ICMP/FTP/TFTP/HTTP/SMTP/POP3)
sip	src_ip	source IP address
smask	src_mask	source mask
dip	dest_ip	destination IP address
dmask	dest_mask	destination mask
dport	dest_port	destination port
dport_end	dest_port_end	destination port end
pool	lb_pool	load balance pool/wan profile

**Note:** [status status] the former status is command, and the latter is value. The value could reference the description below.

**example-delete:**  
Vigor3900@config-t-wan# lbrule delete <profilename>

**2.3.3 Auto load balance**

In **Vigor3900@config-t-wan#** , use [autolb] command to configure auto load balance profile ,then type the [get] or [set] command to configure the auto load balance profile details information.

- \*\*[get] get auto load balance
- \*\*[set] configure auto load balance

**example-**  
Vigor3900@config-t-wan# autolb get

```
Vigor3900@config-t-wan# autolb get
status          : Disable
telecom         : wan1
cnc             : wan1
```

**Vigor3900@config-t-wan#** autolb set [status status] [telecom telecom\_pool] [cnc cnc\_pool]

Command	Value	DESCRIPTION
status	status	status (Enable/Disable)
telecom	telecom_pool	wan profile/load balance pool for cn telecom
cnc	cnc_pool	wan profile/load balance pool for cn cnc

**Note:** [status status] the former status is command, and the latter is value. The value could reference the description below.

## 2.4 Switch

In **Vigor3900@config-t-wan#** , use [switch] command to configure Switch profile ,then type the [interface],[mirror],[vlan] command to configure the details information.

Command	DESCRIPTION
interface	Configure switch interface
mirror	Configure mirror
vlan	Configure switch vlan

**Vigor3900@config-t-wan#** switch

**Vigor3900@config-t-wan-switch#** [interface][mirror][vlan]

### 2.4.1 Configure switch Interface

In **Vigor3900@config-t-wan-switch#** ,users could use [interface] command to configure Switch interface.

**Vigor3900@config-t-wan#** switch

**Vigor3900@config-t-wan-switch#** interface <intf\_num>

**\*\*[intf\_num]** switch interface number (WAN1/WAN2/WAN3/WAN4/WAN5)

### 2.4.2 Configure switch Mirror

In **Vigor3900@config-t-wan-switch#** , use [mirror ] command to configure switch mirror profile ,then type the [get] or [set] command to configure the detail information.

**\*\*[get]** Get current switch mirror

**\*\*[set]** Configure switch port mirror

**Vigor3900@config-t-wan#** switch

**Vigor3900@config-t-wan-switch#** mirror get

```
Vigor3900@config-t-wan-switch# mirror get
status           : Disable
mirroring        : WAN1
mirrored         : WAN2
```



**Vigor3900@config-t-wan-switch#** mirror set [status status] [mirroring mirroring]  
[mirrored mirrored]

Command	Value	DESCRIPTION
status	status	Switch mirror status (Enable/Disable)
mirroring	mirroring	Switch mirroring port (WAN1/WAN2/WAN3/WAN4/WAN5/CPU)
mirrored	mirrored	Switch mirrored port (WAN1/WAN2/WAN3/WAN4/WAN5/CPU)

**Note:** [status status] the former status is command, and the latter is value. The value could reference the description below.

### 2.4.3 Configure switch Vlan

In **Vigor3900@config-t-wan-switch#** , users could use [vlan] command to configure Switch Vlan to add or delete the profile or use “show” to get the profile list in the directory. Enter the profile name to open it and modify the profile directly.

Command	DESCRIPTION
vlan add <profileName>	Create a new vlan
vlan delete <profileName>	Delete vlan configure
vlan show	Get current switch vlan configuration
vlan <profileName>	Modify the selected profile

selected the profile, then use the [get],[member],[untag] command to configure the vlan information.

**\*\*[get]** get switch vlan configuration  
**\*\*[member]** Configure vlan member port ,then use [add] or [remove] to add or remove vlan member interface  
**\*\*[untag]** Configure vlan untag interface

#### example-add:

**Vigor3900@config-t-wan-switch#** vlan add <Profilename>  
**Vigor3900@config-t-wan-switch-vlan-<Profilename>#** member add <Switch interface number>  
**Vigor3900@config-t-wan-switch-vlan-<Profilename>#** member remove <Switch interface number>>  
**Vigor3900@config-t-wan-switch-vlan-<Profilename>#** untag <interface>

#### example-edit:

**Vigor3900@config-t-wan-switch#** vlan show  
**Vigor3900@config-t-wan-switch#** vlan <Profilename>  
**Vigor3900@config-t-wan-switch-vlan-<Profilename>#** get

```
Vigor3900@config-t-wan-switch-vlan-10# get
member          : CPU, WAN1
untag           : WAN1
```

#### example-delete:

**Vigor3900@config-t-wan-switch#** vlan delete <Profilename>

## 3.LAN

LAN (Local Area Network) is a group of subnets regulated and ruled by router. The design of network structure is related to what type of public IP addresses coming from your ISP.

Vigor3900 provides many functions in LAN – Users could use the commands below to set up the details.

Function Command	DESCRIPTION
interlanRoute	Configure Inter-LAN routing
ipbindmac	Configure IP bind Mac
iprouting	Configure iprouting section
pf	Configure profile on LAN
route	Configure static route section
route6	Configure static route6 section
switch	Configure port

**Vigor3900#** configure terminal

**Vigor3900@config-t#** lan

**Vigor3900@config-t-lan#** <command>

### 3.1 Inter-LAN routing

In **Vigor3900@config-t-lan#** , users could use [interlanRoute] command to configure Inter-LAN routing, then type the [get] or [set] command to configure the Inter-LAN routing detail information.

**\*\*[get]** Show Inter-LAN routing

**\*\*[set]** Configure Inter-LAN routing

**example-**

**Vigor3900@config-t-lan#** interlanRoute get

```
Vigor3900@config-t-lan#interlanRoute get
status                : Disable
```

**Vigor3900@config-t-lan#** interlanRoute set [status status]

**Note:** [status status] the former status is command, and the latter is value.

Status Value:Inter-LAN routing status (Enable/Disable)

**example-**

**Vigor3900@config-t-lan#** interlanRoute set status enable

### 3.2 Profile on LAN

In **Vigor3900@config-t-lan#** , users could use [pf] command to configure LAN Profile to add or delete the profile or use “show” to get the profile list in the directory. Enter the

profile name to open it and modify the profile directly.

Command	DESCRIPTION
pf add <profileName>	Create a new vlan
pf delete <profileName>	Delete vlan configure
pf show	Get current switch vlan configuration
pf <profileName>	Modify the selected profile

#### example-

```
Vigor3900@config-t-lan# pf add <SectionName>
Vigor3900@config-t-lan# pf delete <SectionName>
Vigor3900@config-t-lan# pf show
Vigor3900@config-t-lan# pf <SectionName>
```

When you selected the profile or create a new profile, could use the commands below to set up the details.

Command	DESCRIPTION
..	Go back to upper layer menu
exit	Go back to config-t-lan menu
2nd_subnet	Add or remove more 2nd_subnet to this profile
dhcp	Configure DHCP server
dhcp6	Configure DHCP6 server
dhcprelay	Configure DHCP relay agent
get	get current config
radvd	Configure radvd
set	Configure profile

```
Vigor3900@config-t-lan# pf <SectionName>
Vigor3900@config-t-lan-pf-<SectionName>#
```

#### 3.2.1 2nd\_subnet

In **Vigor3900@config-t-lan-pf-<SectionName>#** , users could use [2nd\_subnet] command to configure the 2nd\_subnet profile to add or remove 2nd\_subnet .

```
**[add] add 2nd_subnet to this profile
**[remove] remove 2nd_subnet to this interface
```

```
Vigor3900@config-t-lan-pf-<SectionName># 2nd_subnet add <ip address>
```

#### 3.2.2 Configure dhcp server

In **Vigor3900@config-t-lan-pf-<SectionName>#** , users could use [dhcp] command to configure dhcp server of Lan, then type the [get],[set],[dns] command to configure the detail information.

```
Vigor3900@config-t-lan-pf-<SectionName># dhcp
```

**Vigor3900@config-t-lan-pf-<SectionName>-dhcp# [dns][get][set]**

**\*\*[dns]** Add or remove more dns  
**\*\*[get]** get current config  
**\*\*[set]** Configure dhcp server

#### example-dns

**Vigor3900@config-t-lan-pf-<SectionName>-dhcp# dns [add][remove] <ip address>**

**Vigor3900@config-t-lan-pf-<SectionName>-dhcp# dns add <ip address>**

#### example-get

**Vigor3900@config-t-lan-pf-<SectionName>-dhcp# get**

```
Vigor3900@config-t-lan-pf-lan1-dhcp#get
status           : Enable
start            : 192.168.7.1
end              : 192.168.7.254
dns              :
router           :
lease            : 86400
rdi_pool         : Disable
rdi_start        :
rdi_end          :
```

#### example- set

**Vigor3900@config-t-lan-pf-<SectionName>-dhcp# set [status status] [start start] [end end] [dns dns] [router router] [lease lease] [rdi\_pool rdi\_pool] [rdi\_start rdi\_start] [rdi\_end rdi\_end]**

**Vigor3900@config-t-lan-pf-<SectionName>-dhcp# set status enable**

Command	Value	DESCRIPTION
status	status	status (Enable/Disable)
start	start	pool_ip_start
end	end	pool_ip_end
dns	dns	DNS
router	router	router
lease	lease	IP lease time
rdi_pool	rdi_pool	specify pool for remote dial-in (Enable/Disable)
rdi_start	rdi_start	pool_ip_start for remote dial-in
rdi_end	rdi_end	pool_ip_end for remote dial-in

**Note:**The value could reference the description below.

**Vigor3900@config-t-lan-pf-<SectionName>-dhcp# set status enable**

### 3.2.3 Configure dhcp6 server

In **Vigor3900@config-t-lan-pf-<SectionName>#** , users could use [dhcp6] command to configure dhcp6 server of LAN, then in **Vigor3900@config-t-lan-pf-lan1-**

**<SectionName>-dhcp6#** use the [get] or [set] command to configure the information.

**\*\*[get]** get current config  
**\*\*[set]** Configure dhcp6s

**example-**

**Vigor3900@config-t-lan-pf-<SectionName>#** dhcp6

**Vigor3900@config-t-lan-pf-lan1-<SectionName>-dhcp6#** get

```
Vigor3900@config-t-lan-pf-lan1-dhcp6#get
status          : Disable
start           :
end             :
dns             :
```

**Vigor3900@config-t-lan-pf-lan1-dhcp6#** set [status status] [start start] [end end] [dns dns]

**Vigor3900@config-t-lan-pf-lan1-dhcp6#** set status enable

Command	Value	DESCRIPTION
status	status	status (Enable/Disable)
start	start	pool_ip_start
end	end	pool_ip_end
dns	dns	DNS

**Note:** [status status] the former status is command, and the latter is value. The value could reference the description below.

### 3.2.4 Configure dhcp relay agent

In **Vigor3900@config-t-lan-pf-<SectionName>#** , use [dhcrelay] command to configure dhcp relay agent ,then type the [get] or [set] command to configure the details information.

**\*\*[get]** get current config  
**\*\*[set]** Configure dhcp relay agent

**example-**

**Vigor3900@config-t-lan-pf-<SectionName>#** dhcrelay

**Vigor3900@config-t-lan-pf-<SectionName>-dhcrelay#** get

```
Vigor3900@config-t-lan-pf-lan1-dhcrelay#get
status          : Disable
wan             :
server          :
```

**Vigor3900@config-t-lan-pf-<SectionName>-dhcrelay#** set [status status] [wan wan\_profile] [server server\_ip]

**Vigor3900@config-t-lan-pf-<SectionName>-dhcrelay#** set status enable

Command	Value	DESCRIPTION
---------	-------	-------------

status	status	status (Enable/Disable)
wan	wan_profile	DHCP server location
server	server_ip	DHCP server IP

**Note:** [status status] the former status is command, and the latter is value. The value could reference the description below.

### 3.2.5 Configure radvd

In **Vigor3900@config-t-lan-pf-<SectionName>#** , use [radvd] command to configure auto load balance profile ,then type the [get] or [set] command to configure the auto load balance profile details information.

**\*\*[get]** get current config

**\*\*[set]** Configure radvd

**example-**

**Vigor3900@config-t-lan-pf-<SectionName># radvd**

**Vigor3900@config-t-lan-pf-<SectionName>-radvd# get**

```
Vigor3900@config-t-lan-pf-lan1-radvd#get
status          : Disable
lifetime        : 30
```

**Vigor3900@config-t-lan-pf-<SectionName>-radvd# set [status status] [lifetime lifetime]**

Command	Value	DESCRIPTION
status	status	status (Enable/Disable)
lifetime	lifetime	advertisement lifetime

**Note:** [status status] the former status is command, and the latter is value. The value could reference the description below.

### 3.2.6 get current config

In **Vigor3900@config-t-lan-pf-<SectionName>#**,user could use [get] to get current config

**example-**

**Vigor3900@config-t-lan-pf-<SectionName># get**

```

Vigor3900@config-t-lan-pf-lan1# get
status          : Enable
desc            :
vid             : 10
default_mac     : Enable
mac             : 00:50:7f:71:07:f8
proto           : static
mode            : NAT
ipaddr          : 192.168.7.188
mask            : 255.255.255.0
gateway         :
2nd_subnet      :
proto6          : Link-Local
ip6addr         :
ip6length       : 64
sla_wan         : wan1
sla_id          : 1

```

### 3.2.7 Configure Lan profile

In **Vigor3900@config-t-lan-pf-<SectionName>#**,user could use [set] to configure the Lan profile details.

**Vigor3900@config-t-lan-pf-lan1#** set [status status] [desc description] [vid vid]  
[default\_mac default\_mac] [macmacaddr] [mode mode] [ipaddr ipaddress] [mask mask]  
[gateway gateway] [2nd\_subnet 2nd\_subnet] [proto6 proto6] [ip6addr static\_ip6address]  
[ip6length static\_ip6length] [sla\_wan dhcp6\_sla\_wan] [sla\_id dhcp6\_sla\_id]

#### example-

**Vigor3900@config-t-lan-pf-lan1#** set status enable

**Vigor3900@config-t-lan-pf-lan1#** set mode enable

Command	Value	DESCRIPTION
status	status	status (Enable/Disable)
desc	description	profile description
vid	vid	vlan id
default_mac	default_mac	default mac (Enable/Disable)
mac	macaddr	MAC address
mode	mode	From this subnet to remote network, you have to do NAT or ROUTING (NAT/ROUTING)
ipaddr	ipaddress	static LAN IP address
mask	mask	static LAN mask address
gateway	gateway	static LAN gateway addres
2nd_subnet	2nd_subnet	2nd_subnet
proto6	proto6	IPv6 protocol type (Link-Local/Static/DHCP-SLA)
ip6addr	static_ip6address	static ipv6 address

ip6length	static_ip6length	static IPv6 prefix length
sla_wan	dhcp6_sla_wan	DHCP SLA wan interface
sla_id	dhcp6_sla_id	DHCP SLA id

**Note:** [mode mode] the former mode is command, and the latter is value. The value could reference the description below.

### 3.3 IP Routing

In **Vigor3900@config-t-lan#** , users could use [iprouting] command to configure IP Routing to add or delete the profile or use “show” to get the profile list in the directory. Enter the profile name to open it and modify the profile directly.

Command	DESCRIPTION
iprouting add <SectionName>	Add iprouting section
iprouting delete <SectionName>	Delete iprouting section
iprouting show	Show iprouting summary
iprouting <SectionName>	Modify the selected section

#### example-add

**Vigor3900@config-t-lan#** iprouting add <SectionName>

**Vigor3900@config-t-lan-iprouting-<SectionName>#** set [status status] [wan\_pf wan\_profile] [lan\_pf lan\_profile] [ipaddr ipaddr] [mask mask]

#### example-edit

**Vigor3900@config-t-lan#** iprouting show

**Vigor3900@config-t-lan#** iprouting <SectionName>

**Vigor3900@config-t-lan-iprouting-<SectionName>#** get

```
Vigor3900@config-t-lan-iprouting-test# get
status          : Enable
wan_pf          :
lan_pf          :
ipaddr          :
mask            :
```

**Vigor3900@config-t-lan-iprouting-<SectionName>#** set [status status] [wan\_pf wan\_profile] [lan\_pf lan\_profile] [ipaddr ipaddr] [mask mask]

Command	Value	DESCRIPTION
status	status	status (Enable/Disable)
wan_pf	wan_profile	WAN profile
lan_pf	lan_profile	LAN profile
ipaddr	ipaddr	IP address
mask	mask	mask



**Note:** [status status] the former status is command, and the latter is value. The value could reference the description below.

### 3.4 Route

In **Vigor3900@config-t-lan#** , users could use [route] command to configure Route to add or delete the profile or use “show” to get the profile list in the directory. Enter the profile name to open it and modify the profile directly.

Command	DESCRIPTION
route add <SectionName>	Add static route section
route delete <SectionName>	Delete static route section
route show	Show static route summary
route <SectionName>	Modify the selected section

selected the profile, then use the [get] or [set] command to configure the route information.

**\*\*[get]** Get configuration on static route

**\*\*[set]** Set configuration on static route

#### example-add

**Vigor3900@config-t-lan#** route add <SectionName>

**Vigor3900@config-t-lan-route- <SectionName>#** set [status status] [dest dest] [mask mask] [gateway gateway] [pf profile]

#### example-edit

**Vigor3900@config-t-lan#** route show

**Vigor3900@config-t-lan#** route <SectionName>

**Vigor3900@config-t-lan-route- <SectionName>#** get

```
Vigor3900@config-t-lan-route-profile1# get
status           : Disable
dest             : 20.20.20.20
mask             :
gateway          : 1.1.1.1
pf               : lan1
```

**Vigor3900@config-t-lan-route- <SectionName>#** set [status status] [dest dest] [mask mask] [gateway gateway] [pf profile]

Command	Value	DESCRIPTION
status	status	status (Enable/Disable)
dest	dest	destination IP address
mask	mask	subnet mask
gateway	gateway	gateway IP address
pf	profile	network profile

**Note:** [status status] the former status is command, and the latter is value. The value could reference the description below.

### 3.5 Route6

In **Vigor3900@config-t-lan#** , users could use [route] command to configure Route6 to add or delete the profile or use “show” to get the profile list in the directory. Enter the profile name to open it and modify the profile directly.

Command	DESCRIPTION
route add <SectionName>	Add static route6 section
route delete <SectionName>	Delete static route6 section
route show	Show static route6 summary
route <SectionName>	Modify the selected section

selected the profile, then use the [get] or [set] command to configure the route6 information.

**\*\*[get]** Get configuration on static route6

**\*\*[set]** Set configuration on static route6

#### example-add

**Vigor3900@config-t-lan#**route6 add <SectionName>

**Vigor3900@config-t-lan-route6- <SectionName>#** set [status status] [dest dest] [prefix\_len prefix\_len] [nexthop nexthop] [pf profile]

#### example-edit

**Vigor3900@config-t-lan#**route6 show

**Vigor3900@config-t-lan#**route6 <SectionName>

**Vigor3900@config-t-lan-route6- <SectionName>#** get

```
Vigor3900@config-t-lan-route6-profile6# get
status          : Disable
dest            : ::1
prefix_len      : 20
nexthop         : ::2
pf              : lan1
```

**Vigor3900@config-t-lan-route6- <SectionName>#** set [status status] [dest dest] [prefix\_len prefix\_len] [nexthop nexthop] [pf profile]

Command	Value	DESCRIPTION
status	status	status (Enable/Disable)
dest	dest	destination IP address
prefix_len	prefix_len	prefix length
nexthop	nexthop	nexthop address
pf	profile	network profile

**Note:** [status status] the former status is command, and the latter is value. The value could reference the description below.

## 3.6 Switch

In **Vigor3900@config-t-lan#** , use [switch] command to configure Switch of the LAN profile ,then type the [interface],[mirror],[vlan] command to configure the details information.

Command	DESCRIPTION
interface	Configure switch interface
mirror	Configure mirror
vlan	Configure switch vlan

**Vigor3900@config-t-lan#** switch

**Vigor3900@config-t-lan-switch#** [interface][mirror][vlan]

### 3.6.1 Configure switch Interface

In **Vigor3900@config-t-wan-switch#** ,users could use [interface] command to configure Switch interface.

**Vigor3900@config-t-lan#**switch

**Vigor3900@config-t-lan-switch#** interface <intf\_num>

**\*\*[intf\_num]** Lan switch port (LAN1/LAN2/LAN3)

**Vigor3900@config-t-lan-switch#** interface show

**\*\*[show]** Get lan current switch configuration

selected the Lan switch port, then use the [get] or [set] command to configure the detail information.

**\*\*[get]** get switch interface configuration

**\*\*[set]** Configure switch interface

**example-**

**Vigor3900@config-t-lan-switch#** interface <Lan switch port>

**Vigor3900@config-t-lan-switch-<Lan switch port>#** get

```
Vigor3900@config-t-lan-switch-LAN1# get
status          : Enable
duplex          : Full
speed           : Auto
```

**Vigor3900@config-t-lan-switch-<SectionName>#** set [status status] [duplex duplex]  
[speed speed]

Command	Value	DESCRIPTION
---------	-------	-------------

status	status	switch interface status (Enable/Disable)
duplex	duplex	switch interface duplex (Half/Full)
speed	speed	switch interface speed (10M/100M/1000M/Auto)

**Note:** [status status] the former status is command, and the latter is value. The value could reference the description below.

### 3.6.2 Configure switch Mirror

In **Vigor3900@config-t-lan-switch#**, use [mirror] command to configure Switch Mirror profile ,then type the [get] or [set] command to configure the Switch Mirror information.

\*\*[get] Get current switch mirror configuration

\*\*[set] Configure switch interface mirror

**example-**

**Vigor3900@config-t-lan-switch#** mirror get

```
Vigor3900@config-t-lan-switch# mirror get
status           : Disable
mirroring        : LAN2
mirrored         : LAN1
```

**Vigor3900@config-t-lan-switch#** mirror set [status status] [mirroring mirroring]  
[mirrored mirrored]

Command	Value	DESCRIPTION
status	status	Switch mirror status (Enable/Disable)
mirroring	mirroring	Switch mirroring port (LAN1/LAN2/LAN3/CPU)
mirrored	mirrored	Switch mirrored port (LAN1/LAN2/LAN3/CPU)

**Note:** [status status] the former status is command, and the latter is value. The value could reference the description below.

## 3.7 Vlan

In **Vigor3900@config-t-lan#** , users could use [vlan] command to configure Vlan to add or delete the profile or use “show” to get the profile list in the directory. Enter the profile name to open it and modify the profile directly.

Command	DESCRIPTION
vlan add <SectionName>	Create a new vlan
vlan delete <SectionName>	Delete vlan configure
vlan show	Get current switch vlan configuration
vlan <SectionName>	Modify the selected section

selected the profile, then use the [get],[member],[untag] command to configure the vlan information.

**\*\*[get]** get switch vlan configuration  
**\*\*[member]** Configure vlan member interface, then use [add] or [remove] to add or remove  
**\*\*[untag]** Configure vlan untag interface

#### example-add:

**Vigor3900@config-t-lan-switch#** vlan add <SectionName>  
**Vigor3900@config-t-lan-switch-vlan-<SectionName>#** member add <Switch interface number>  
**Vigor3900@config-t-lan-switch-vlan-<SectionName>#** member remove <Switch interface number>  
**Vigor3900@config-t-lan-switch-vlan-<SectionName>#** untag <interface>

#### example-edit:

**Vigor3900@config-t-lan-switch#** vlan show  
**Vigor3900@config-t-lan-switch#** vlan <SectionName>  
**Vigor3900@config-t-lan-switch-vlan-<SectionName>#** get

```
Vigor3900@config-t-lan-switch-vlan-10# get
member          : CPU, LAN1, LAN2, LAN3
untag           : LAN1, LAN2, LAN3
```

**Vigor3900@config-t-lan-switch-vlan-<SectionName>#** untag [add][remove] <interface>

**\*\*[add]** Add vlan untag interface  
**\*\*[remove]** remove vlan untag interface

## 3.8 IP Bind Mac

In **Vigor3900@config-t-lan#**, users could use [ipbindmac] command to configure Vlan to add or delete the profile or use “show” to get the profile list in the directory. Enter the profile name to open it and modify the profile directly.

Also use the [get] or [set] command to configure the IP Bind Mac Mode.

Command	DESCRIPTION
ipbindmac add <SectionName>	Create IP Bind Mac Profile
ipbindmac delete <SectionName>	Delete IP Bind Mac Profile
ipbindmacshow	Show IP Bind Mac Info
ipbindmac <SectionName>	Modify the selected section
Ipbindmac get	Get IP Bind Mac Mode
Ipbindmac set	Set IP Bind Mac Mode

selected the profile, use the [get] or [set] command to configure the IP Bind Mac Configuration.

**\*\*[get]** get IP Bind Mac Configuration  
**\*\*[set]** Set IP Bind Mac Configuration

#### example-add

**Vigor3900@config-t-lan# ipbindmac add <profileName>**  
**Vigor3900@config-t-lan-ipbindmac-<profileName># set [ip ip] [macaddr macaddr]**

**example-edit**

**Vigor3900@config-t-lan#ipbindmac show**  
**Vigor3900@config-t-lan#ipbindmac <profileName>**  
**Vigor3900@config-t-lan-ipbindmac-<profileName>#get**

```
Vigor3900@config-t-lan-ipbindmac-199# get
ip                : 192.168.1.199
macaddr          : 00:50:7f:11:12:33
```

**Vigor3900@config-t-lan-ipbindmac-<profileName>#set [ip ip] [macaddr macaddr]**

Command	Value	DESCRIPTION
ip	ip	IP address
macaddr	macaddr	Mac address

**Note: [ip ip] the former ip is command, and the latter is value. The value could reference the description below.**

**example-ipbindmac mode**

**Vigor3900@config-t-lan# ipbindmac get**

```
Vigor3900@config-t-lan#ipbindmac get
mode                : Disable
```

**Vigor3900@config-t-lan# ipbindmac set [mode mode]**

Command	Value	DESCRIPTION
mode	mode	IP bind MAC mode (Disable/Enable/Strict_Bind)

**Note: [mode mode] the former mode is command, and the latter is value. The value could reference the description below.**

## 4.NAT

NAT (Network Address Translation) is a method of mapping one or more IP addresses and/or service ports into different specified services. Vigor3900 provides three functions in NAT – Port Redirection, DMZ Host and Address Mapping. Users could use the commands below to set up the details.

Functions Command	DESCRIPTION
address_mapping	Configure NAT address mapping
dmz	Configure DMZ
port_redirect	Configure NAT port redirection

**Vigor3900#** configure nat

**Vigor3900@config-nat#** [port\_redirect][dmz][address\_mapping]

### 4.1 Port Redirect

#### 4.1.1 Port Redirect

In **Vigor3900@config-nat#** , users could use [**port\_redirect**] command to configure Port Redirect to add or delete the profile or use “show” to get the profile list in the directory. Enter the profile name to open it and modify the profile detail configuration directly.

Command	DESCRIPTION
port_redirect add <profileName>	Create port redirect profile
port_redirect delete <profileName>	Delete port redirect profile
port_redirect show	Show port redirect configuration
port_redirect <profileName>	Open the selected profile

selected the profile, then use the [get] or [set] command to configure the address mapping information.

**\*\*[get]** Show address mapping configuration

**\*\*[set]** configure NAT address mapping

**example-add:**

**Vigor3900#** configure nat

**Vigor3900@config-nat#** port\_redirect add <profileName>

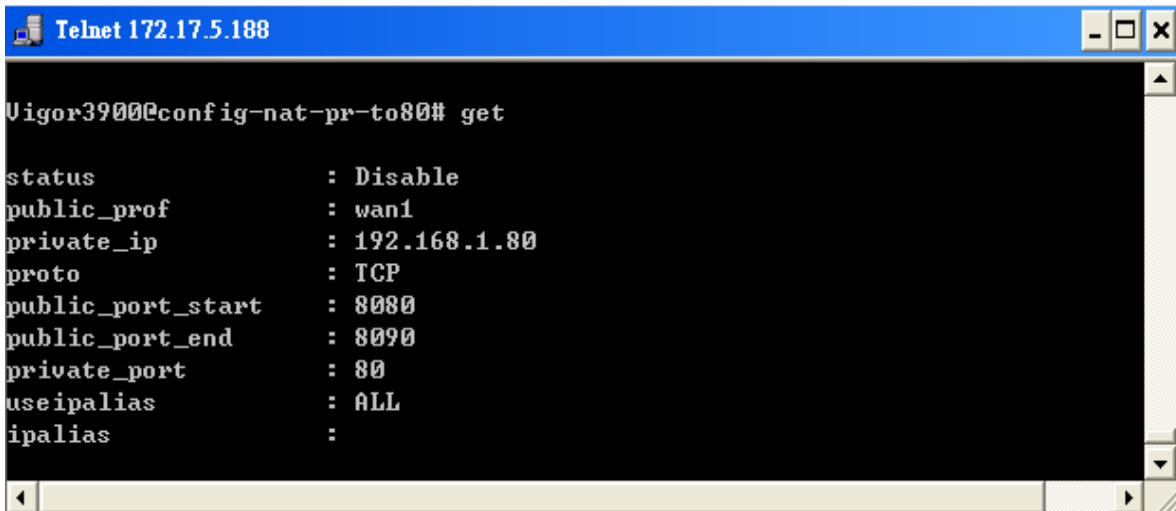
**Vigor3900@config-nat-pr-<profileName>#** get

**example-modify:**

**Vigor3900@config-nat#** port\_redirect show

**Vigor3900@config-nat#** port\_redirect <profileName>

**Vigor3900@config-nat-pr-<profileName># get**



```
Telnet 172.17.5.188
Vigor3900@config-nat-pr-to80# get
status          : Disable
public_prof     : wan1
private_ip      : 192.168.1.80
proto           : TCP
public_port_start : 8080
public_port_end  : 8090
private_port     : 80
useipalias      : ALL
ipalias         :
```

**Vigor3900@config-nat-pr-<profileName># set [status status] [public\_prof public\_prof] [private\_ip private\_ip] [proto proto] [public\_port\_start public\_port\_start] [public\_port\_end public\_port\_end] [private\_port private\_port] [useipalias useipalias] [ipalias ipalias]**

Command	value	DESCRIPTION
status	status	Port redirection admin status <Enable/ Disable>
public_prof	public_prof	Profile <WAN profile>
private_ip	private_ip	Private IP address<IP address>
proto	proto	Protocol <TCP / UDP / TCP/UDP>
public_port_start	public_port_start	source port number <number>
public_port_end	public_port_end	source port number <number>
private_port	private_port	destination port number <number>
useipalias	Useipalias	IP alias is used or not <ALL/IP_ALIAS/WAN_INTERFACE>
ipalias	ipalias	IP alias <IP address>

**Note:** [status status] the former status is prefix, and the latter is value. The value could reference the description below.

**example-delete:**

**Vigor3900@config-nat# port\_redirect delete <profileName>**

## 4.2 DMZ Host

### 4.2.1 DMZ Host

In **Vigor3900@config-nat#** , users could use [dmz] command to configure DMZ Host to add or delete the profile or use “show” to get the profile list in the directory. Enter the profile name to open it and modify the profile directly.



Command	DESCRIPTION
dmz add <profileName>	Create DMZ profile
dmz delete <profileName>	Delete DMZ profile
dmz show	Show DMZ configuration
dmz <profileName>	Modify the selected profile

selected the profile, then use the [get] or [set] command to configure the address mapping information.

**\*\*[get]** Show DMZ Configuration

**\*\*[set]** configure DMZ

#### example-add:

**Vigor3900@config-nat#** dmz add <profileName>

**Vigor3900@config-nat-dmz-<profileName>#** get

#### example-modify:

**Vigor3900@config-nat#** dmz show

**Vigor3900@config-nat#** dmz <profileName>

**Vigor3900@config-nat-dmz-<profileName>#** get

```

Telnet 172.17.5.188

Vigor3900@config-nat-dmz-dn21# get

status          : Enable
prof            : wan5
ip              : 1.1.1.1
useipalias      : Disable
ipalias         :

Vigor3900@config-nat-dmz-dn21# get

```

**Vigor3900@config-nat-dmz-<profileName>#** set [status status] [prof prof] [ip private\_ip] [useipalias useipalias] [ipalias ipalias]

Command	value	DESCRIPTION
status	Status	DMZ admin status < Enable/Disable>
prof	prof	WAN Profile<WAN profile>
ip	private_ip	private IP address<IP address>
useipalias	Useipalias	IP alias is used or not< Enable/Disable>
ipalias	Ipalias	IP alias<IP address>

**Note:** [status status] the former status is prefix, and the latter is value. The value could reference the description below.

#### example-delete:

**Vigor3900@config-nat#** dmz delete <profileName>

## 4.3 Address Mapping

### 4.3.1 Address Mapping

In **Vigor3900@config-nat#** , users could use [**address\_mapping** ] command to configure Address Mapping to add or delete the profile or use “show” to get the profile list in the directory. Enter the profile name to open it and modify the profile directly.

Command	DESCRIPTION
address_mapping Add <profileName>	Create dmz profile
address_mapping Delete <profileName>	Delete dmz profile
address_mapping show	Show dmz configuration
address_mapping <profileName>	Modify the selected profile

selected the profile, then use the [get] or [set] command to configure the address mapping information.

**\*\*[get]** Show NAT address mapping Configuration  
**\*\*[set]** configure NAT address mapping

#### example-add:

**Vigor3900@config-nat#** address\_mapping add <profileName>  
**Vigor3900@config-nat-addrmap-<profileName>#** get

#### example-modify:

**Vigor3900@config-nat#** address\_mapping show  
**Vigor3900@config-nat#** address\_mapping <profileName>  
**Vigor3900@config-nat-addrmap-<profileName>#** get

```
Vigor3900@config-nat-addrmap-to155# get
status           : Enable
dest             : wan1
private_ip       : 192.168.1.155
mask             : 255.255.255.0
proto            : All
useipalias       : Disable
ipalias          :
```

**Vigor3900@config-nat-addrmap-<profileName>#** set [status status] [dest dest]  
[private\_ip private\_ip] [mask mask] [proto proto] [useipalias useipalias] [ipalias ipalias]

Command	value	DESCRIPTION
status	status	Address Mapping admin status (Enable/Disable)
dest	dest	WAN profile
private_ip	private_ip	Private IP address
mask	mask	Subnet Mask
proto	proto	Protocol (TCP / UDP / TCP/UDP / All)
useipalias	useipalias	IP alias is used or not (Enable/Disable)

ipalias	ipalias	Public IP address
---------	---------	-------------------

**Note:** [status status] the former status is prefix, and the latter is value. The value could reference the description below.

**example-delete:**

**Vigor3900@config-nat#** address\_mapping delete <profileName>

## 5.Firewall

The firewall controls the allowance and denial of packets through the router. Vigor3900 provides six functions in Firewall – Filter Setup (IP Filter, Application Filter, URL filter), Dos Defense, MAC Block and Port Block. Use this command to display information about Firewall. Users could use the commands below to set up the details.

functions Command	DESCRIPTION
appfilter	Application Filter Set
ddos	DDoS Defense
ipfilterset	IP Filter Set
macblock	Configure MAC Block
portblock	Configure Port Block
URL Filter	URL Filter Set

**Vigor3900#** configure fw

**Vigor3900@config-fw#** <appfilter/ ddos/.....>

### 5.1 Filter setup

#### 5.1.1 IP Filter

In **Vigor3900@config-fw#** , users could use [**ipfilterset** ] command to configure IP Filter to add or delete the profile or use “show” to get the profile list in the directory. Enter the profile name to open it and modify the profile directly.

Command	DESCRIPTION
Ipfilterset add <profileName>	Create IP Filter Set profile
Ipfilterset delete <profileName>	Delete IP Filter Set profile
ipfilterset show	Show IP Filter Set Info
ipfilterset <profileName>	Modify the selected profile

selected the profile, then use the [get].[set] or [ipfilterrule] command to configure the IP Filter information.

**\*\*[get]** Show IP Filter Set

**\*\*[ipfilterrule]** Configure IP Filter Rule Detail

**\*\*[set]** configure IP Filter Set

**example-add:**

**Vigor3900#** configure fw

**Vigor3900@config-fw#** ipfilterset add <profilename>

**example-modify:**

**Vigor3900@config-fw#** ipfilterset show

**Vigor3900@config-fw#** ipfilterset <profilename>

**Vigor3900@config-fw-ipset-<profilename>#** get

```
Vigor3900@config-fw-ipset-rd1# get
status          : Disable
comment         : for rd1
```

**Vigor3900@config-fw-ipset-<profilename># set [status status] [comment comment]**

Command	value	DESCRIPTION
status	status	group status (Enable/Disable)
comment	comment	comment for IP filter group

**Note:** [status status] the former status is command, and the latter is value. The value could reference the description below.

**example-delete:**

**Vigor3900@config-nat# ipfilterset delete <profileName>**

#### **5.1.1.1 IP Filter Rule**

In **Vigor3900@config-ipset-<profilename>#** , users could use [ ipfilterrule ] command to configure IP Filter Rule to add or delete the profile or use “show” to get the profile list in the directory. Enter the profile name to open it and modify the profile directly.

Command	DESCRIPTION
ipfilterrule add <profileName>	Create IP Filter Rule Profile Detail
ipfilterrule delete <profileName>	Delete IP Filter Rule Profile Detail
ipfilterrule show	Show IP Filter Rule Profile Info Detail
ipfilterrule <profileName>	Modify the selected profile

selected the profile, then use the [get].[set] or [ipfilterrule] command to configure the IP Filter Rule information.

**\*\*[get]** Show IP Filter Rule Detail configuration

**\*\*[set]** configure IP Filter Rule Detail

**example-add**

**Vigor3900@config-fw-ipset-<profilename># ipfilterrule add <profile>**

**Vigor3900@config-fw-ipset-<profilename>-< ipfilterrule ProfileName># get**

**example-modify**

**Vigor3900@config-fw-ipset-<profilename># ipfilterrule show**

**Vigor3900@config-fw-ipset-<profilename># ipfilterrule <profile>**

**Vigor3900@config-fw-ipset-<profilename>-< ipfilterrule ProfileName># get**

```
Vigor3900@config-fw-ipset-rd1-rd1detail# get
status          : Disable
time            : None
srcgrp          : Any
dstgrp          : Any
srv             : Any
in              : Any
out             : Any
frag            : do_not_care
action          : Pass
nextgrp         : None
syslog          : disable
```

**Vigor3900@config-fw-ipset-<profilename>-< ipfilterrule Profilename># set** [status status] [profile profile] [time time\_profile] [srcgrp src\_group] [dstgrp dst\_group] [srv service\_group] [in in\_intf] [out out\_intf] [frag fragment][action action] [nextgrp next\_group] [syslog syslog]

Command	value	DESCRIPTION
status	status	rule status (Enable/Disable)
profile	profile	Profile
time	time_profile	Time Profile
srcgrp	src_group	Source IP Group
dstgrp	dst_group	Destination IP Group
srv	service_group	Service Type Group
in	in_intf	Input interface
out	out_intf	Output interface
frag	fragment	Fragment (do_not_care/fragment/unfragment)
action	action	Block action (Block/Pass/Block_If_No_Further_Match/ Pass_If_No_Further_Match)
nextgrp	next_group	Next group name
syslog	syslog	Syslog status (Enable/Disable)

**Note:** [status status] the former status is command, and the latter is value. The value could reference the description below.

**example-delete:**

**Vigor3900@config-nat# ipfilterrule delete** <profileName>

### 5.1.2 Application Filter

In **Vigor3900@config-fw#** , users could use [**appfilter**] command to configure Application Filter to add or delete the profile or use “show” to get the profile list in the directory. Enter the profile name to open it and modify the profile directly.

Command	DESCRIPTION
---------	-------------

appfilter Add <profileName>	Create Application Filter Set profile
appfilter Delete <profileName>	Delete Application Filter Set profile
appfilter show	Show Application Filter Set Info
appfilter <profileName>	Modify the selected profile

selected the profile, then use the [get] or [set] command to configure the Application Filter information.

**\*\*[get]** Show Application Filter Rule Detail configuration

**\*\*[set]** configure Application Filter Rule

#### example-add:

**Vigor3900#** configure fw

**Vigor3900@config-fw#** appfilter add <profilename>

**Vigor3900@config-fw-appfilter-<profilename>#** get

#### example-modify:

**Vigor3900@config-fw#** appfilter show

**Vigor3900@config-fw#** appfilter <profilename>

**Vigor3900@config-fw-appfilter-<profilename>#** get

```
Vigor3900@config-fw-appfilter-appfilter1# get
status           : Disable
time             : None
srcgrp           : Any
excpgrp         : None
imobj           : None
p2pobj          : None
protobj         : None
```

**Vigor3900@config-fw-appfilter-<profilename>#** set [status status] [time time\_profile] [srcgrp src\_group] [excpgrp excp\_grp] [imobj imobjects] [p2pobj p2pobjects] [protobj protobjects]

Command	Value	DESCRIPTION
status	status	rule status (Enable/Disable)
time	time_profile	Time Profile
srcgrp	src_group	Source IP Group
excpgrp	excp_grp	Exception IP Group
imobj	imobjects	Block IM Object
p2pobj	p2pobjects	Block P2P Object
protobj	protobjects	Block Protocol Object

**Note:** [status status] the former status is command, and the latter is value. The value could reference the description below.

#### example-delete:

**Vigor3900@config-nat#** appfilter delete <profileName>

### 5.1.3 URL Filter

In **Vigor3900@config-fw#** , users could use **[urlfilter]** command to configure URL Filter to add or delete the profile or use “show” to get the profile list in the directory. Enter the profile name to open it and modify the profile directly.

Command	DESCRIPTION
urlfilter add <profileName>	Create URL Filter Set profile
urlfilter delete <profileName>	Delete URL Filter Set profile
urlfilter show	Show URL Filter Set Info
urlfilter <profileName>	Modify the selected profile

selected the profile, then use the **[get]** or **[set]** command to configure the URL Filter information.

**\*\*[get]** Show URL Filter Rule Detail configuration

**\*\*[set]** configure URL Filter Rule

#### example-add:

**Vigor3900#** configure fw

**Vigor3900@config-fw#** urlfilter add <profilename>

**Vigor3900@config-fw-urlfilter-<profilename>#** get

#### example-modify:

**Vigor3900#** configure fw

**Vigor3900@config-fw#** urlfilter show

**Vigor3900@config-fw#** urlfilter <profilename>

**Vigor3900@config-fw-urlfilter-<profilename>#** get

```
Vigor3900@config-fw-urlfilter-urlfilter1# get
status           : Disable
time             : None
srcgrp           : Any
white            : None
black            : None
fext             : None
webcat           : None
```

**Vigor3900@config-fw-urlfilter-<profilename>#set** [status status] [time time\_profile]  
[srcgrp src\_group] [white whitelist] [black blacklist] [fext fextobjects] [webcat webcategory]

Command	Value	DESCRIPTION
Status	Status	rule status (Enable/Disable)
time	time_profile	Time Profile
srcgrp	src_group	Source IP Group



white	whitelist	Allow websites with matching keywords
black	blacklist	Block websites with matching keywords
fext	fextobjects	Restrict Web Feature
webcat	webcategory	Content Filter Forbidden Categories

**Note:** [status status] the former status is command, and the latter is value. The value could reference the description below.

**example-delete:**

**Vigor3900@config-nat#** urlfilter delete <profileName>

## 5.2 DoS Defense

### 5.2.1 Dos

In **Vigor3900@config-fw#** , users could use [switch] and [system] command to get the Dos profile information.

Command	DESCRIPTION
switch <get/set>	DDoS Defense on switch
system <get/set>	DDoS Defense on system

selected the profile, then use the [get] or [set] command to configure .

**\*\*[get]** Get DoS Defense Configuration

**\*\*[set]** Set DoS Defense Configuration

**example-switch:**

**Vigor3900@config-fw#** ddos

**Vigor3900@config-fw-ddos#** switch get

```
Vigor3900@config-fw-ddos# switch get
bcast      : Disable
mcast      : Disable
unucast    : Disable
unmcast    : Disable
rate       : 1
```

**Vigor3900@config-fw-ddos#** switch set [bcast bcast] [mcast mcast] [unucast unucast] [unmcast unmcast] [rate rate]

Command	Vaule	DESCRIPTION
bcast	bcast	Broadcast Storm Defense (Enable/Disable)
mcast	mcast	Multicast Storm Defense (Enable/Disable)
unucast	unucast	Unknown Unicast Storm Defense (Enable/Disable)
unmcast	unmcast	Unknown Multicast Storm Defense (Enable/Disable)
rate	rate	Storm Filtering Rate (unit:64 kbps)

example-system:

Vigor3900@config-fw# ddos

Vigor3900@config-fw-ddos# system get

```
Vigor3900@config-fw-ddos# system get
```

```
status           : Disable
syn_flood        : Disable
syn_flood_threshold : 300
syn_flood_timeout : 10
icmp_flood       : Disable
icmp_flood_threshold : 300
icmp_flood_timeout : 10
udp_flood        : Disable
udp_flood_threshold : 300
udp_flood_timeout : 10
port_scan        : Disable
udp_flood_threshold : 300
ip_options       : Disable
land             : Disable
smurf            : Disable
tracert          : Disable
syn_fragment     : Disable
fraggle          : Disable
teardrop         : Disable
ping_of_death    : Disable
icmp_fragment    : Disable
unknow_protocol  : Disable
```

Vigor3900@config-fw-ddos# system set [status status] [syn\_flood syn\_flood]  
[syn\_flood\_threshold syn\_flood\_threshold] [syn\_flood\_timeout syn\_flood\_timeout]  
[icmp\_flood icmp\_flood] [icmp\_flood\_threshold icmp\_flood\_threshold] [icmp\_flood\_timeout  
icmp\_flood\_timeout] [udp\_flood udp\_flood] [udp\_flood\_threshold udp\_flood\_threshold]  
[udp\_flood\_timeoutudp\_flood\_timeout] [port\_scan port\_scan] [udp\_flood\_threshold  
port\_scan\_threshold] [ip\_options ip\_options] [land land] [smurf smurf] [tracert tracert]  
[syn\_fragment syn\_fragment] [fraggle fraggle] [teardrop teardrop] [ping\_of\_death ping\_of\_  
death] [icmp\_fragment icmp\_fragment] [unknow\_protocol unknow\_protocol]

Command	Vaule	DESCRIPTION
status	status	DDoS admin status (Enable/Disable)
syn_flood	syn_flood	Block syn flood attack (Enable/ Disable)
syn_flood_threshold	syn_flood_threshold	Syn flood threshold (Packets/sec)
syn_flood_timeout	syn_flood_timeout	Syn flood timeout (sec)
icmp_flood	icmp_flood	Block ICMP flood attack (Enable/ Disable)
icmp_flood_threshold	icmp_flood_threshold	ICMP flood threshold (Packets/sec)
icmp_flood_timeout	icmp_flood_timeout	ICMP flood timeout (sec)
udp_flood	udp_flood	Block UDP flood attack (Enable/ Disable)
udp_flood_threshold	udp_flood_threshold	UDP flood threshold (Packets/sec)
udp_flood_timeout	udp_flood_timeout	UDP flood timeout (sec)

port_scan	port_scan	Block port scan attack (Enable/ Disable)
port_scan_threshold	port_scan_threshold	Port scan threshold (Packets/sec)
ip_options	ip_options	Block IP options attack (Enable/Disable)
land	land	Block land attack (Enable/Disable)
smurf	smurf	Block smurf attack (Enable/Disable)
tracert	tracert	Block trace route attack (Enable/Disable)
syn_fragment	syn_fragment	Block SYN fragment attack (Enable/Disable)
fraggle	fraggle	Block fraggle attack (Enable/Disable)
teardrop	teardrop	Block teardrop attack (Enable/Disable)
ping_of_death	ping_of_death	Block ping of death attack (Enable/Disable)
icmp_fragment	icmp_fragment	Block ICMP fragment attack (Enable/Disable)
unknown_protocol	unknown_protocol	Block unknown protocol attack (Enable/Disable)

**Note:** [status status] the former status is command, and the latter is value. The value could reference the description below.

## 5.3 MAC Block

### 5.3.1 Mac Block

In **Vigor3900@config-fw#** , users could use [macblock] command to configure MAC Block to add or delete the profile or use “show” to get the profile list in the directory. Enter the profile name to open it and modify the profile directly.

Command	DESCRIPTION
macblock add <profileName>	Create MAC Block profile
macblock delete <profileName>	Delete MAC Block profile
macblock show	Show MAC Block profile Info
macblock <profileName>	Modify the selected profile

selected the profile, then use the [get] or [set] command to configure the MAC Block information.

**\*\*[get]** Show Mac Block configuration

**\*\*[set]** configure Mac Block profile

**example-add:**

**Vigor3900@config-fw#** macblock add <profilename>

**Vigor3900@config-fw-macblock-<profilename>#** get

**example-edit:**

**Vigor3900@config-fw#** macblock show

**Vigor3900@config-fw#** macblock <profilename>

**Vigor3900@config-fw-macblock-<profilename># get**

```
Vigor3900@config-fw-macblock-blckmac1# get
status          : Enable
mac             : 00:00:00:11:11:11
```

**Vigor3900@config-fw-macblock-<profilename># set [status status] [mac mac]**

Command	Value	DESCRIPTION
status	status	MAC block admin status (Enable/Disable)
mac	mac	MAC address

**Note:** [status status] the former status is command, and the latter is value. The value could reference the description below.

**example-delete:**

**Vigor3900@config-fw# macblock delete <profilename>**

## 5.4 Port Block

### 5.4.1 Port Block

In **Vigor3900@config-fw#** , users could use [**portblock**] command to configure Port Block to add or delete the profile or use “show” to get the profile list in the directory. Enter the profile name to open it and modify the profile directly.

Command	DESCRIPTION
portblock add <profileName>	Create Port Block profile
portblock delete <profileName>	Delete Port Block profile
portblock show	Show Port Block profile Info
portblock <profileName>	Modify the selected profile

selected the profile, then use the [get] or [set] command to configure the Port Block information.

**\*\*[get]** Show Port Block configuration

**\*\*[set]** configure Port Block

**example-add:**

**Vigor3900# configure fw**

**Vigor3900@config-fw# portblock add <profilename>**

**Vigor3900@config-nat-pr-<profileName># get**

**example-edit:**

**Vigor3900@config-fw# portblock show**

**Vigor3900@config-fw# portblock <profilename>**

**Vigor3900@config-fw-<profileName># get**

```
Vigor3900@config-fw-portblock-blockport1# get
status          : Enable
port            : 9999
```

**Vigor3900@config-fw-portblock-<profilename>#** set [status status] [port port]

Command	Value	DESCRIPTION
status	status	Port block admin status (Enable/Disable)
port	port	port number

## 6.Objects Setting

Vigor3900 provides many functions in Objects Setting .Users could use the commands below to set up the details.

Funtion Command	DESCRIPTION
fext_object	Configure File Extension Object
im_object	Configure IM Object
ip_group	Configure IP Group
ip_object	Configure IP Object
keyword_group	Configure Keyword Group
keyword_object	Configure Keyword Object
p2p_object	Configure P2P Object
proto_object	Configure Protocol Object
service_group	Configure Service Group
service_object	Configure Service Object
time_group	Configure Time Group
time_object	Configure Time Object
web_category	Configure Web Category Object

**Vigor3900#** configure object\_setting

**Vigor3900@config-object#** <fext\_object/ im\_object / .....>

### 6.1 IP Object

In **Vigor3900@config-object#** , users could use [ip\_object] command to configure IP Object to add or delete the profile or use “show” to get the profile list in the directory. Enter the profile name to open it and modify the profile directly.

Command	DESCRIPTION
ip_object add <profileName>	Create IP Object profile
ip_object delete <profileName>	Delete IP Object profile
ip_object show	Show IP Object Profile Info
ip_object <profileName>	Modify the selected profile

selected the profile, then use the [get] or [set] command to configure the IP Object information.

**\*\*[get]** Show IP Object configuration

**\*\*[set]** configure IP Object

**example-add:**

**Vigor3900@config-object#** ip\_object add <profileName>

**Vigor3900@config-object-ipobj-<profileName>#** get

#### example-edit:

```
Vigor3900@config-object# ip_object show
Vigor3900@config-object# ip_object <profileName>
Vigor3900@config-object-ipobj-<profileName># get
```

```
Vigor3900@config-object-ipobj-iprange169# get
inf           : Any
type          : Range
sip           : 192.168.1.169
eip           : 192.168.1.254
mask          :
```

**Vigor3900@config-object-ipobj-<profileName># set** [inf interface] [type type] [sip start\_ip] [eip end\_ip] [mask mask]

Command	Value	DESCRIPTION
inf	interface	IP object attribute (Any/Source/Destination)
type	type	Address Type (Single/Range/Subnet)
sip	start_ip	Start IP Address
eip	end_ip	End IP Address
mask	mask	Subnet Mask

**Note:** [inf interface] the former inf is command, and the latter is value. The value could reference the description below.

#### example-delete:

```
Vigor3900@config-object# ip_object delete <profileName>
```

## 6.2 IP Group

In **Vigor3900@config-object#** , users could use [ip\_group] command to configure IP Group to add or delete the profile or use “show” to get the profile list in the directory. Enter the profile name to open it and modify the profile directly.

Command	DESCRIPTION
ip_group add <profileName>	Create Service Group profile
ip_group delete <profileName>	Delete IP Group profile
ip_group show	Show IP Group Profile Info
ip_group <profileName>	Modify the selected profile

selected the profile, then use the [get], [set],[objects] command to configure the IP Group information.

**\*\*[get]** Show IP Object Detail configuration

**\*\*[set]** configure IP Object Detail

**\*\*[objects]** Configure objects member

#### example-add:

**Vigor3900@config-object#** ip\_group add <profileName>

**Vigor3900@config-object-ipgrp-<profileName>#** objects [add][remove] <member>

**\*\*[add]** Add objects member (IP Object configuration)

**\*\*[remove]** remove objects member (IP Object configuration)

#### example-edit:

**Vigor3900@config-object#** ip\_group show

**Vigor3900@config-object#** ip\_group <profileName>

**Vigor3900@config-object-ipobj-<profileName>#** get

```
Vigor3900@config-object-ipgrp-alice# get
inf          : Any
desc         :
obj          :
```

**Vigor3900@config-object-ipobj-<profileName>#** set [inf interface] [desc description]

Command	Value	DESCRIPTION
Inf	interface	IP group attribute (Any/Source/Destination)
desc	description	Description

**Note:** [inf interface] the former inf is command, and the latter is value. The value could reference the description below.

#### example-delete:

**Vigor3900@config-object#** ip\_object delete <profileName>

## 6.3 Service Type Object

In **Vigor3900@config-object#** , users could use [service\_object] command to configure Service Type Object to add or delete the profile or use “show” to get the profile list in the directory. Enter the profile name to open it and modify the profile directly.

Command	DESCRIPTION
service_object add <profileName>	Create Service Object Profile
service_object delete <profileName>	Delete Service Object Profile
service_object show	Show Service Object Profile Info
service_object <profileName>	Modify the selected profile

selected the profile, then use the [get] or [set] command to configure the Service Type Object information.

**\*\*[get]** Show Service Object configuration

**\*\*[set]** configure Service Object



**example-add:**

**Vigor3900@config-object#** service\_object add <profileName>

**Vigor3900@config-object-srvobj-<profileName>#** [get][set] \*\*same with the next edit

**example-edit:**

**Vigor3900@config-object#** service\_object show

**Vigor3900@config-object#** service\_object <profileName>

**Vigor3900@config-object-srvobj-<profileName>#** get

```
Vigor3900@config-object-srvobj-service1# get
proto          : TCP
spt_start      : 1
spt_end        : 65535
dpt_start      : 1
dpt_end        : 65535
```

**Vigor3900@config-object-srvobj-<profileName>#** set [proto protocol]

[spt\_startsrc\_port\_start] [spt\_end src\_port\_end] [dpt\_start dest\_port\_start] [dpt\_end dest\_port\_end]

Command	Value	DESCRIPTION
proto	protocol	protocol (TCP/UDP/TCP/UDP/ICMP)
spt_start	src_port_start	Source port start
spt_end	src_port_end	Source port end
dpt_start	dest_port_start	Destination port start
dpt_end	dest_port_end	Destination port end

**Note:** [proto protocol] the former proto is command, and the latter is value. The value could reference the description below.

**example-delete:**

**Vigor3900@config-object#** service\_object delete <profileName>

## 6.4 Service Type Group

In **Vigor3900@config-object#** , users could use [service\_group] command to configure Service Group to add or delete the profile or use “show” to get the profile list in the directory. Enter the profile name to open it and modify the profile directly.

Command	DESCRIPTION
service_group add <profileName>	Create Service Group Profile
service_group delete <profileName>	Delete Configure objects member Profile
service_groupshow	Show Service Group Profile Info
service_group <profileName>	Modify the selected profile

selected the profile, then use the [get],[set],[objects] command to configure the Service Group information.

**\*\*[get]** Show Service Group configuration  
**\*\*[set]** configure Service Group  
**\*\*[objects]** Configure objects member

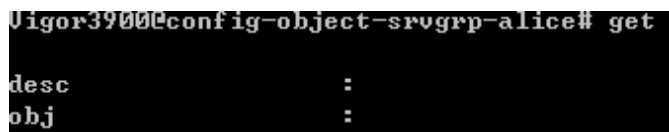
**example-add:**

**Vigor3900@config-object#** service\_group add <profileName>  
**Vigor3900@config-object-ipgrp-<profileName>#** objects [add][remove] <member>

**\*\*[add]** Add objects member  
**\*\*[remove]** remove objects member

**example-edit:**

**Vigor3900@config-object#** service\_group show  
**Vigor3900@config-object#** service\_group <profileName>  
**Vigor3900@config-object-srvgrp-<profileName>#** get



```
Vigor3900@config-object-srvgrp-alice# get
desc          :
obj           :
```

**Vigor3900@config-object-srvobj-<profileName>#** set [desc description]  
**\*\*[desc]** Description

**Note:** [desc description ] the former desc is command, and the latter is value.

**example-delete:**

**Vigor3900@config-object#** service\_group delete <profileName>

## 6.5 Keyword Object

In **Vigor3900@config-object#** , users could use [keyword\_object] command to configure Keyword Object to add or delete the profile or use “show” to get the profile list in the directory. Enter the profile name to open it and modify the profile directly.

Command	DESCRIPTION
keyword_object add <profileName>	Create Keyword Object profile
keyword_object delete <profileName>	Delete Keyword Object profile
keyword_object show	Show Keyword Object Profile Info
keyword_object <profileName>	Modify the selected profile

selected the profile, then use the [get] or [member] command to configure the Keyword Object information.

**\*\*[get]** Show Keyword Object Detail configuration  
**\*\*[member]** configure member

**example-add:**

**Vigor3900@config-object#** keyword\_object add <profileName>  
**Vigor3900@config-object-kwobj-<profileName>#** get

```
Vigor3900@config-object-kwobj-p2p# get
member                : ht, emule, deonkey
```

**Vigor3900@config-object-kwobj-<profileName>#** member [add][remove]<member>

\*\*[add] Add objects member

\*\*[remove] remove objects member

**example-delete:**

**Vigor3900@config-object#** keyword\_object delete <profileName>

## 6.6 Keyword Group

In **Vigor3900@config-nat#** , users could use [keyword\_group] command to configure Keyword Group to add or delete the profile or use “show” to get the profile list in the directory. Enter the profile name to open it and modify the profile directly.

Command	DESCRIPTION
keyword_group add <profileName>	Create Keyword Group Profile
keyword_group delete <profileName>	Delete Keyword Group Profile
keyword_group show	Show Keyword Group Profile Info
keyword_group <profileName>	Modify the selected profile

selected the profile, then use the [get] or [set] command to configure the Keyword Group information.

\*\*[get] Show Keyword Group configuration

\*\*[set] configure Keyword Group

\*\*[objects] Configure objects member

**example-add:**

**Vigor3900@config-object#** keyword\_group add <profileName>

**Vigor3900@config-object-kwgrp-<profileName>#** objects [add][remove]<member>

\*\*[add] Add objects member

\*\*[remove] remove objects member

**example-edit:**

**Vigor3900@config-object#** keyword\_group show

**Vigor3900@config-object#** keyword\_group <profileName>

**Vigor3900@config-object-kwgrp-<profileName>#** get

```
Vigor3900@config-object# keyword_group kgroup1
Vigor3900@config-object-kwgrp-kgroup1# get

desc                : x
obj                 :
```

**Vigor3900@config-object-kwgrp-<profileName>#** set [desc description]  
\*\*[desc] Description

**Note:** [desc description ] the former desc is command, and the latter is value.

**example-delete:**

**Vigor3900@config-object#** keyword\_ group delete <profileName>

## 6.7 File Extension Object

In **Vigor3900@config-nat#** , users could use [fext\_object] command to configure File Extension Object to add or delete the profile or use “show” to get the profile list in the directory. Enter the profile name to open it and modify the profile directly.

Command	DESCRIPTION
fext_object add <profileName>	Create File Extension Object Profile
fext_object delete <profileName>	Delete File Extension Object Profile
fext_object show	Show File Extension Object Profile Info
fext_object <profileName>	Modify the selected profile

**Vigor3900@config-object#** fext\_object add <profileName>

Modify the selected profile then use below command to setting the File Extension Object detail information.

Command	DESCRIPTION
activex	Configure ActiveX file extension (.alx/.apb/.axs/.ocx/.olb/.ole/.tlb/.viv/.vrm)
audio	Configure Audio file extension (.asf/.avi/.mov/.mpe/.mpeg/.mpg/.mp4/.qt/.rm/.wmv/.3gp/.3gpp/.3gpp2/.3g2)
compression	Configure COMPRESSION file extension (.ace/.arj/.bzip2/.bz2/.cab/.gz/.gzip/.rar/.sit/.zip)
execution	Configure EXECUTION file extension (.bas/.bat/.com/.exe/.inf/.pif/.reg/.scr)
image	Configure Image file extension (.bmp/.dib/.gif/.jpeg/.jpg/.jpg2/.jp2/.pct/.pcx/.pic/.pict/.png/.tif/.tiff)
java	Configure JAVA file extension (.class/.jad/.jar/.jav/.java/.jcm/.js/.jse/.jsp/.jtk)
video	Configure Video file extension (.asf/.avi/.mov/.mpe/.mpeg/.mpg/.mp4/.qt/.rm/.wmv/.3gp/.3gpp/.3gpp2/.3g2)

**Vigor3900@config-object#** fext\_object add <profileName>

**Vigor3900@config-object-fext-<profileName>#** image [add][remove] <type>

\*\*[add] Add ACTIVEX file extension

\*\*[remove] remove ACTIVEX file extension

**example-add:**

```
Vigor3900@config-object# fext_object add <profileName>
Vigor3900@config-object-fext-<profileName># image add .bmp
Vigor3900@config-object-fext-<profileName># image add .jpg
Vigor3900@config-object-fext-<profileName># get
```

**\*\*[get]** Show File Extension Object Detail configuration

```
Vigor3900@config-object# fext_object add test2
Vigor3900@config-object-fext-test2# image add .bmp
Vigor3900@config-object-fext-test2# image add .jpg
Vigor3900@config-object-fext-test2# get

image          : .bmp, .jpg
video          :
audio          :
java           :
activex        :
zip            :
exe            :
```

**example-delete:**

```
Vigor3900@config-object# fext_object delete <profileName>
```

## 6.8 IM Object

In **Vigor3900@config-nat#** , users could use [ im\_object] command to configure IM Object to add or delete the profile or use “show” to get the profile list in the directory. Enter the profile name to open it and modify the profile directly.

Command	DESCRIPTION
im_object add <profileName>	Create IM Object profile
im_object delete <profileName>	Delete IM Object profile
im_object show	Show IM Object Profile Info
im_object <profileName>	Modify the selected profile

selected the profile, then use the [get] or [member] command to configure the IM Object information.

**\*\*[get]** Show IM Object Detail configuration

**\*\*[member]** configure IM object member

**example-add:**

```
Vigor3900@config-object# im_object add <profileName>
Vigor3900@config-object-im-<profileName># get
```

```
Vigor3900@config-object-im-im1# get

member         : Web-IM
```

```
Vigor3900@config-object-im-<profileName># member [add][remove] <Im type>
```

**\*\*[add]** Add IM type

```

**[remove] remove IM type
** IM type :MSN / AIM / Google-Talk / Yahoo-Msg / QQ / Web-IM / iCQ / iCHAT / SKYPE
example-edit:
Vigor3900@config-object# im_object show
Vigor3900@config-object# im_object <profileName>
Vigor3900@config-object-im-<profileName>## im_object <profileName>

```

```

example-delete:
Vigor3900@config-object# im_object delete <profileName>

```

## 6.9 P2P Object

In **Vigor3900@config-object#** , users could use [p2p\_object ] command to configure P2P Object to add or delete the profile or use “show” to get the profile list in the directory. Enter the profile name to open it and modify the profile directly.

Command	DESCRIPTION
p2p_object add <profileName>	Create P2P Object profile
p2p_object delete <profileName>	Delete P2P Object profile
p2p_object show	Show P2P Object Profile Info
p2p_object <profileName>	Modify the selected profile

selected the profile, then use the [get] or [member] command to configure the P2P Object information.

```

**[get] Show P2P Object Detail configuration
**[member] Configure P2P object member

```

```

example-add:
Vigor3900@config-object# p2p_object add <profileName>
Vigor3900@config-object-p2p-<profileName># member [add][remove]< P2P Type>

```

```

**[add] Add p2p type
**[remove] remove p2p type
**P2P Type :SoulSeek/eDonkey/FastTrack/Gnutella/BT/OpenFT/OpenNap/Xunlei/
Vagaa/PP365/POCO/Clubbox/Ares/ezPeer/Pando/Huntmine/Kuwo

```

```

Vigor3900@config-object-p2p-<profileName># get

```

```

Vigor3900@config-object-kwobj-p2p# get
member          : bt, emule, deonkey

```

```

example-delete:
Vigor3900@config-object# p2p_object delete <profileName>

```

## 6.10 Protocol Object

In **Vigor3900@config-object#** , users could use [proto\_object] command to configure Protocol Object to add or delete the profile or use “show” to get the profile list in the

directory. Enter the profile name to open it and modify the profile directly.

Command	DESCRIPTION
proto_object add <profileName>	Create Protocol Object profile
proto_object delete <profileName>	Delete Protocol Object profile
proto_object show	Show Protocol Object Profile Info
proto_object <profileName>	Modify the selected profile

selected the profile, then use the [get] or [set] command to configure the Protocol Object information.

\*\*[get] Show Protocol Object Detail configuration

\*\*[member] Configure Protocol object member

#### example-add:

**Vigor3900@config-object#** proto\_object add <profileName>

**Vigor3900@config-object-proto-<profileName>#** member [add][remove] < Protocol Type>

\*\*[add] Add Protocol type

\*\*[remove] remove Protocol type

\*\*Protocol Type : DNS/FTP/HTTP/IMAP/IRC/NNTP/POP3/SMB/SMTP/SNMP/SSH/SSL/TLS/TELNET/MSSQL/MYSQL/Oracle/PostgreSQL/Sybase/DB2/Informix

**Vigor3900@config-object-proto-<profileName>#** get

```
Vigor3900@config-object-protocol1# get
member          : DNS, FTP, HTTP
```

#### example-delete:

**Vigor3900@config-object#** proto\_object delete <profileName>

## 6.11 Web Category Object

In **Vigor3900@config-object#** , users could use [web\_category] command to Configure Web Category Object to add or delete the profile or use “show” to get the profile list in the directory. Enter the profile name to open it and modify the profile directly.

Command	DESCRIPTION
web_category add <profileName>	Create Web Category Object Profile
web_category delete <profileName>	Delete Web Category Object Profile
web_category show	Show Web Category Object Profile Info
web_category <profileName>	Modify the selected profile

**Vigor3900@config-object#** web\_category add <profileName>

**Vigor3900@config-object-webcate-<profileName>#** <command>

Command	DESCRIPTION
business	Configure Web Category - business
chat	Configure Web Category - chat
child_protect	Configure Web Category - Child Protect
computer	Configure Web Category - computer
get	Show Web Category Object Detail configuration
leisure	Configure Web Category - leisure
other	Configure Web Category - other

#### 6.11.1 get Web Category Object Detail configuration

**Vigor3900@config-object-webcate-<profile># get**

```
Vigor3900@config-object-webcate-webc1# get
childp           : Alcohol-And-Tobacco, Weapons
leisure          : Entertainment
business         : Business
chat             :
computer         :
other            :
```

#### 6.11.2 business

**Vigor3900@config-object-webcate-<profile>#business [add][remove] <category\_type>**

**\*\*[add]** Add Web Category business type

**\*\*[remove]** remove Web Category business type

**<category\_type>** :Business/Job-Search/Web-Based-Email

#### 6.11.3 chat

**Vigor3900@config-object-webcate-<profile># chat [add][remove] <category\_type>**

**\*\*[add]** Add Web Category chat type

**\*\*[remove]** remove Web Category chat type

**<category\_type>** : Chat/Instant-Messaging

#### 6.11.4 Child Protect

**Vigor3900@config-object-webcate-<profile># child\_protect [add][remove]**  
**<category\_type>**

**\*\*[add]** Add Web Category Child Protect type

**\*\*[remove]** remove Web Category Child Protect type

**<category\_type>** :Alcohol-And-Tobacco/Criminal-And-Activity/Gambling/Hate-And  
-Intolerance/Illegal-Drug/Nudity/Pornography-And-Sexually-explicit/  
Violence/Weapons/School-Cheating/Sex-Education/Tasteless/  
Child-Abuse-Images

#### 6.11.5 computer

**Vigor3900@config-object-webcate-<profile># computer [add][remove]**  
**<category\_type>**



```

**[add] Add Web Category computer type
**[remove] remove Web Category computer type
<category_type>: Anonymizers/Forums-And-Newsgroups/Computers-And-Technology/
                  Down-sites/Streamiing-Media-And-Downloads/Phishing-And-Fraud/
                  Search-engines-And-Portals/Social-Networking/Spam-sites/Malware/
                  Botnets/Hacking/Illegal-Softwares/Information-Security/Peer-to-Peer

```

### 6.11.6 leisure

**Vigor3900@config-object-webcate-<profile>#** leisure [add][remove] <category\_type>

```

**[add] Add Web Category leisure type
**[remove] remove Web Category leisure type
<category_type> : Entertainment/Games/Sports/Travel/Leisure-And-Recreation/
                  Fashion-And-Beauty

```

### 6.11.7 other

**Vigor3900@config-object-webcate-<profile>#** other [add][remove] <category\_type>

```

**[add] Add Web Category other type
**[remove] remove Web Category other type
<category_type> : Advertisement-And-Pop-Ups/Arts/Transportation/Compromised/
                  Dating-And-Personals/Education/Finance/Government/
                  Health-And-Medicine/News/Non-profits-And-NGOs/Persional-Sites/
                  Politics/Real-Estate/Religion/Restaurants-And-Dining/Shopping/
                  Translators/General/Cults/Greeting-Cards/Image-Sharing/Network-
                  Errors/Parked-Domains/Private-IP-Address/Uncategorised-Sites

```

## 6.12 Time Object

In **Vigor3900@config-object#** , users could use [time\_object ] command to configure Time Object to add or delete the profile or use “show” to get the profile list in the directory. Enter the profile name to open it and modify the profile directly.

Command	DESCRIPTION
time_object add <profileName>	Create Time Object Profile
time_object delete <profileName>	Delete Time Object Profile
time_object show	Show Time Object Profile Info
time_object <profileName>	Modify the selected profile

selected the profile, then use the [get],[set],[weekdays] command to configure the Time Object information.

```

**[get] Show Time Object Detail configuration
**[set] configure Time Object Detail
**[weekdays] Configure weekdays

```

#### example-add:

**Vigor3900@config-object#** time\_object add <profileName>

**Vigor3900@config-object-timeobj-<profileName># weekdays add < Weekdays Type>**

**\*\*[add]** Add weekdays  
**\*\*[remove]** Remove weekdays  
**\*\*Weekdays Type :** Mon/Tue/Wed/Thu/Fri/Sat/Sun

**example-edit:**

**Vigor3900@config-object#** time\_object show  
**Vigor3900@config-object#** time\_object <profileName>  
**Vigor3900@config-object-timeobj-<profileName>#** get

```
Vigor3900@config-object# time_object add test2
Vigor3900@config-object-timeobj-test2# get

freq           : Once
sdate          : 2010-01-01
stime          : 00:00:00
edate          : 2010-01-01
etime          : 00:00:00
weekdays      :
```

**Vigor3900@config-object-timeobj-<profileName>#** set set [freq frequency] [sdate startdate] [stime starttime] [edate enddate] [etimeendtime]

Command	Value	DESCRIPTION
freq	frequency	call schedule work frequency (Once/Weekdays)
sdate	startdate	call schedule start date
stime	starttime	call schedule start time
edate	enddate	call schedule stop date
etime	endtime	call schedule stop time

**Note:** [freq frequency] the former freq is command, and the latter is value. The value could reference the description below.

**Vigor3900@config-object-timeobj-<profileName>#** weekdays [add][remove] < Weekdays Type>

**example-delete:**

**Vigor3900@config-object#** time\_object delete <profileName>

### 6.13 Time Group

In **Vigor3900@config-nat#** , users could use [time\_group] command to configure Time Group to add or delete the profile or use “show” to get the profile list in the directory. Enter the profile name to open it and modify the profile directly.

Command	DESCRIPTION
time_group add <profileName>	Create Time Group Profile
time_group delete <profileName>	Delete Time Group Profile

time_group show	Show Time Group Profile Info
time_group <profileName>	Modify the selected profile

selected the profile, then use the [get],[set],[objects] command to configure the Time Group information.

```

**[get] Show Time Group configuration
**[set] configure Time Group
**[objects] Configure objects member

```

#### example-add:

```
Vigor3900@config-object# time_group add <profileName>
```

```
Vigor3900@config-object-kwgrp-<profileName># objects [add][remove] <member>
```

```

**[add] Add objects member
**[remove] remove objects member

```

#### example-edit:

```
Vigor3900@config-object# keyword_group show
```

```
Vigor3900@config-object# keyword_group <profileName>
```

```
Vigor3900@config-object-kwgrp-<profileName># get
```

```
Vigor3900@config-object-kwgrp-kgroup1# get
```

```

desc          : x
obj           :

```

```
Vigor3900@config-object-kwgrp-<profileName># set [desc description]
```

```
**[desc] Description
```

**Note:** [desc description] the former desc is command, and the latter is value.

#### example-delete:

```
Vigor3900@config-object# keyword_group delete <profileName>
```

## 7. User Management

User Management can manage all the accounts (user profiles) to connect to Internet via different protocols.

**Vigor3900#** configure user

**Vigor3900@config-user#** users <command>

### 7.1 User Profile

In **Vigor3900@config-user#** , users could use [port\_redirect] command to configure User Profile to add or delete the profile or use “show” to get the profile list in the directory. Enter the profile name to open it and modify the profile directly.

Command	DESCRIPTION
users add <userName>	Add application users
users delete <userName>	Delete users
users show	Get configuration of application users
users <userName>	Modify the selected profile

selected the profile, then use the [get] or [set] command to configure the User Profile information.

**\*\*[get]** Get users configuration system

**\*\*[set]** Set Application User

**example-add:**

**Vigor3900@config-user#** users add <profileName>

**Vigor3900@config-usr-<profileName>#** set <command>

**example-edit:**

**Vigor3900@config-usr#** users show

**Vigor3900@config-usr#** users <profileName>

**Vigor3900@config-usr-<profileName>#** get

```
Vigor3900@config-user# users testuser1
Vigor3900@config-usr-testuser1# get

pass          : testuser1
pptp          : Enable
if            : lan1
fixip         :
sysuser       : true
group         : Admin
motp          : Disable
pin           :
secret        :
```

**Vigor3900@config-usr-<profileName>#** set [pass password] [pptp pptp] [if pptpif] [fixip fixip] [sysuser sysuser] [group group] [motp en\_motp] [pin motp\_pin] [secret motp\_secret]

Command	Value	DESCRIPTION
pass	password	Password
pptp	pptp	PPTP/L2TP (Enable/Disable)
if	pptpif	PPTP/L2TP User LAN Group
fixip	fixip	Assign Fix IP Address
sysuser	sysuser	Is System User (true/false)
group	group	Group (User/Operator/Admin)
motp	en_motp	Use mOTP function (Enable/Disable)
pin	motp_pin	PIN code
secret	motp_secret	Initial Secret

**Note:** [pass password] the former pass is command, and the latter is value. The value could reference the description below.

**example-delete:**

**Vigor3900@config-usr#** users delete <profileName>

## 8.Application

Vigor3900 provides seven functions in Application– DDNS, RADIUS, UpnP.....Users could use the commands below to set up the details.

Command	DESCRIPTION
ddns	Configure dynamic DNS service
exit	Go back to main menu
ha	Configure High Availability
rip	Configure RIP
samba	Configure Samba service
upnp	Configure UPnP
vs	Configure virtual system
wol	Wake on LAN

**Vigor3900#** configure applications

**Vigor3900@config-app#** <command> <profileName>

### 8.1Dynamic DNS

In **Vigor3900@config-app#** , users could use [ddns] command to configure Dynamic Dns.User could use “show” to get the profile list in the directory, or selected the profile, then use the [get] or [set] command to configure the Dynamic Dns details information.

**Vigor3900#** configure applications

**Vigor3900@config-app#** ddns

**Vigor3900@config-app-ddns#** <command>

**\*\*[show]** Show current configurations

**\*\*[get]** Get ddns detail configurations

**\*\*[set]** Set ddns parameters

**example-show:**

**Vigor3900@config-app-ddns#** show

```
Vigor3900@config-apps-ddns# show
profile      status      if          provider    stype
domain
ddns1        disable     wan1        members.dyndns.orgdynamic
ddns2        disable     wan1        members.dyndns.orgdynamic
ddns3        disable     wan1        members.dyndns.orgdynamic
ddns4        disable     wan1        members.dyndns.orgdynamic
```

**example-get:**

**Vigor3900@config-app-ddns#** get <profile name>

```
Vigor3900@config-apps-ddns# get ddns1
status          : Disable
if              : wan1
provider        : dyndns
stype           : Dynamic
domain          :
login           :
pw              :
wildcard        : Disable
backup_mx       : Disable
mx              :
```

**example-set:**

**Vigor3900@config-app-ddns#** set [status status] [if if-name] [provider provider] [stype server\_type] [domain domain-name] [login login-name] [pw password] [wildcard wildcard] [backup\_mx backup-mx] [mx mail-extender] <ProfileName>

Command	Value	DESCRIPTION
status	status	admin status (Enable/Disable)
if	if-name	profile name
provider	provider	DDNS service provider (dyndns/no-ip/dtdns/changeip/huagai/dy-name-server/3322/vigorddns)
stype	server_type	DDNS service type (Dynamic/Static/Custom)
domain	domain-name	domain name
login	login-name	user login name
pw	password	password
wildcard	wildcard	wild card (Enable/Disable)
backup_mx	backup-mx	Backup MX (Enable/Disable)
mx	mail-extender	mail extender

**Note:** [status status] the former status is command, and the latter is value. The value could reference the description below.

## 8.2 UPnP Configuration

In **Vigor3900@config-app#** , users could use [upnp] command to configure UPnP. User could use the [get] or [set] command to configure the UPnP details information.

**Vigor3900@config-app#** upnp

**Vigor3900@config-app-upnp#** [get][set]

**\*\*[get]** Get UPnP detail configurations

**\*\*[set]** configure UPnP

**example-get:**

**Vigor3900@config-app-upnp#** get

```
Vigor3900@config-app-upnp# get
status          : Enable
download        : 1024
upload          : 512
external        : wan
internal        : lan
max_session     : 500
```

**Vigor3900@config-app-upnp#** set [status status] [download download] [upload upload] [external external] [internal internal] [max\_session max\_session]

Command	Value	DESCRIPTION
status	status	UPnP status (Enable/Disable)
download	download	Download speeds in kpbs
upload	upload	Upload speeds in kpbs
external	external	External Interface
internal	internal	Internal Interface
max_session	max_session	Max session

**Note:** [status status] the former status is command, and the latter is value. The value could reference the description below.

## 8.3 Virtual System

### 8.3.1 configure

In **Vigor3900@config-app#** , users could use [vs] command to configure Virtual System to add or delete the profile or use “show” to get the profile list in the directory. Enter the profile name to open it and modify the profile directly.

Command	DESCRIPTION
vs add <sectionName>	Add virtual system section
vs delete <sectionName>	Delete virtual system section
vs show	Show virtual system summary
vs <sectionName>	Modify the selected profile

selected the profile, then use the [get] or [set] command to configure the Virtual System information.

**\*\*[get]** Get configuration on virtual system

**\*\*[set]** Set configuration on virtual system

**example-add:**

**Vigor3900@config-app#** vs

**Vigor3900@config-app-vs#** vs add <sectionName>

**Vigor3900@config-app-vs-<SectionName>#** set <command>

**example-edit:**

**Vigor3900@config-app#** vs



**Vigor3900@config-app-vs#** vs <SectionName>  
**Vigor3900@config-app-vs-<SectionName>#** get

```
Vigor3900@config-app-vs-vs1# get
status          : Disable
vlan            : lan1
df              : Disable
```

**Vigor3900@config-app-vs-<SectionName>#** set [status status] [vlan vlan] [df directly\_forward]

Command	Value	DESCRIPTION
status	status	virtual system status (Enable/Disable)
vlan	vlan	local vlan
df	directly_forward	directly forward without local vlan (Enable/Disable)

**Note:** [status status] the former status is command, and the latter is value. The value could reference the description below.

**example-delete:**

**Vigor3900@config-app-vs#** vs delete <SectionName>

### 8.3.2 Tunnel

In **Vigor3900@config-app-vs-<Section>#** , users could use [tunnel] command to configure vs-tunnel section to add or delete the profile or use “show” to get the profile list in the directory. Enter the profile name to open it and modify the profile directly.

Command	DESCRIPTION
tunnel add <sectionName>	Add vs-tunnel section
tunnel delete <sectionName>	Delete vs-tunnel section
tunnel show	Show vs-tunnel summary
tunnel <sectionName>	Modify the selected section

selected the section, then use the [get],[set],[subnet] command to configure the vs-tunnel information.

**\*\*[get]** Get configuration on vs-tunnel  
**\*\*[set]** Set configuration on vs-tunnel  
**\*\*[subnet]** Add or remove more subnets to this tunnel

**example-add**

**Vigor3900@config-app#** vs  
**Vigor3900@config-app-vs#** vs <SectionName>  
**Vigor3900@config-app-vs-<SectionName>#** tunnel add <SectionName>  
**Vigor3900@config-app-vs-<SectionName>#** get

```
Vigor3900@config-app-vs-vs1# tunnel add test1
Vigor3900@config-app-vs-vs1-tunnel-test1# get

vs                : vs1
desc              :
subnet            :
```

#### example-edit

```
Vigor3900@config-app-vs-<SectionName># tunnel show <SectionName>
Vigor3900@config-app-vs-<SectionName># tunnel <SectionName>
Vigor3900@config-app-vs-<SectionName>-tunnel-<SectionName># get
Vigor3900@config-app-vs-<SectionName>-tunnel-<SectionName># set [desc
description] [subnet subnet]
```

```
**[desc]  tunnel description
**[subnet] subnet
```

Add more subnet or Remove the select subnet , use the [add],[remove] command to configurat

```
Vigor3900@config-app-vs-<SectionName>-tunnel-<SectionName># subnet [add]
[remove] <subnet>
```

```
**[add]    Add more subnets to this tunnel
**[remove] Remove more subnets to this tunnel
```

#### example-delete:

```
Vigor3900@config-app-vs-<SectionName># tunnel delete <SectionName>
```

### 8.3.3 IPSec Policy

In **Vigor3900@config-app-vs-<SectionName>-tunnel-<SectionName>** , users could use [ipsecpolicy] command to configure vs- IPSec Policy section. User could choose the ipsec policy is initiate or not, then use the [get] or [set] command to configure the IPSec Policy details information.

```
**[initiate] initiate ipsec policy
**[disconnect] terminate ipsec policy

**[get]  Get ipsec configuration on tunnel of virtual system
**[set]  Set ipsec configuration on tunnel of virtual system
```

#### example-

```
Vigor3900@config-app-vs-<SectionName>-tunnel-<SectionName># ipsecpolicy
Vigor3900@config-app-vs-<SectionName>-tunnel-<SectionName>-ipsecpolicy#
[initiate][disconnect]
```

```
Vigor3900@config-app-vs-<SectionName>-tunnel-<SectionName>-ipsecpolicy# get
```

```

Vigor3900@config-app-vs-vs1-tunnel-tunnel1-ipsecpolicy# get
status                : Disable
auth                  : PSK
leftpem               :
psk                   :
secret_type           : ESP
localhost             : wan1
localsubnet           : 192.168.1.0/24
localnext             : 0.0.0.0
remotehost            : 0.0.0.0
remotesubnet          : 0.0.0.0/32
more_remotesubnet     :
aggrmode              : Disable
localid               :
remoteid              :
phase1keylifetime     : 28800
phase2keylifetime     : 3600
pfs                   : Disable
dpd                   : Enable
dpddelay              : 30
dpdtimeout            : 120
gre                   : Disable
localgreip            :
remotegreip           :
autogrekey            : Enable
grekeyin              :
grekeyout             :
ikephase1proposal     : DES_G1
ikephase1authproposal : ALL
ikephase2proposal     : 3DES_with_auth
ikephase2authproposal : ALL
acceptall             : acceptall

```

**Vigor3900@config-app-vs-<SectionName>-tunnel-<SectionName>-ipsecpolicy# set**  
[status status] [auth auth] [leftpem leftpem] [psk psk] [secret\_type secret\_type][localhost  
localhost] [localsubnet localsubnet] [localnext localnext] [remotehost remotehost]  
[remotesubnet remotesubnet] [more\_remotesubnet more\_remotesubnet] [aggrmode  
aggrmode] [localid localid] [remoteid remoteid][phase1keylifetimephase1keylifetime]  
[phase2keylifetime phase2keylifetime] [pfs pfs] [dpd dpd][dpddelay dpddelay] [dpdtimeout  
dpdtimeout] [dhccoveripsec dhccoveripsec] [l2tpoveripsec l2tpoveripsec] [gre gre]  
[localgreip localgreip] [remotegreip remotegreip] [autogrekey autogrekey] [grekeyin  
grekeyin] [grekeyout grekeyout] [ikephase1proposal ikephase1proposal]  
[ikephase1authproposal ikephase1authproposal] [ikephase2proposal ikephase2proposal]  
[ikephase2authproposal ikephase2authproposal] [acceptall acceptall]

Command	Value	DESCRIPTION
status	status	admin status (Enable / Disable)
auth	auth	auth type (PSK / RSA)
leftpem	leftpem	leftpem
psk	psk	preshared key
secret_type	secret_type	Security protocol (ESP / AH)
localhost	localhost	local host

localsubnet	localsubnet	local subnet
localnext	localnext	local next hop
remotehost	remotehost	remote host
remotesubnet	remotesubnet	remote subnet
more_remotesubnet	more_remotesubnet	More remote subnet
aggrmode	aggrmode	Aggressive mode (Enable / Disable)
localid	localid	local peer id
remoteid	remoteid	remote peer id
phase1keylifetime	phase1keylifetime	IKE phase1 key life time
phase2keylifetime	phase2keylifetime	IKE phase2 key life time
pfs	pfs	perfect forward secrecy status (Enable / Disable)
dpd	dpd	dead peer detection status (Enable / Disable)
dpddelay	dpddelay	DPD delay
dpdtimeout	dpdtimeout	DPD timeout
dhccoveripsec	dhccoveripsec	DHCP Over IPSec (Enable / Disable)
l2tpoveripsec	l2tpoveripsec	L2TP Over IPSec (Enable / Disable)
gre	gre	GRE function (Enable / Disable)
localgreip	localgreip	local GRE IP
remotegreip	remotegreip	remote GRE IP
autogrekey	autogrekey	auto generate GRE key (Enable / Disable)
grekeyin	grekeyin	GRE in key
grekeyout	grekeyout	GRE out key
ikephase1proposal	ikephase1proposal	IKE phase1 proposal (DES_G1/DES_G2 /DES_G5 /DES_G14 / 3DES_G1/3DES_G2/3DES_G5/3DES_G14/ AES128_G1/AES128_G2/AES128_G5/ AES128_G14/ AES192_G1 / AES192_G2 / AES192_G5 / AES192_G14/ AES256_G1 / AES256_G2 / AES256_G5 / AES256_G14 )
ikephase1authpropo sal	ikephase1authpropo sal	IKE phase1 authentication (ALL / MD5 / SHA1)
ikephase2proposal	ikephase2proposal	IKE phase2 proposal (DES_without_auth / DES_with_auth / 3DES_without_auth / 3DES_with_auth / AES128_without_auth / AES128_with_auth / AES192_without_auth / AES192_with_auth / AES256_without_auth / AES256_with_auth )
ikephase2authpropo sal	ikephase2authpropo sal	IKE phase2 authentication (ALL / MD5 / SHA1)

acceptall	acceptall	accepted proposal for dial-in (acceptall / acceptabove)
-----------	-----------	---

**Note:** [status status] the former status is command, and the latter is value. The value could reference the description below.

## 8.4 High Availability

In **Vigor3900@config-app#** , users could use [ha] command to configure High Availability .then use the [get] or [set] command to configure the High Availability information.

**Vigor3900#** configure applications

**Vigor3900@config-app#** ha <command>

\*\*[get] Show High Availability Configuration

\*\*[set] Configure High Availability

**example**

**Vigor3900@config-app#** ha get

```
Vigor3900@config-app# ha get
status          : Disable
lan             :
vip             :
vhid            : 1
role            : slave
pip             :
```

**Vigor3900@config-app#** ha set [status status] [lan lan] [vip vip] [vhid vhid] [role role] [pip pip]

Command	Value	DESCRIPTION
status	status	status (Enable/Disable)
lan	lan	LAN profile
vip	vip	virtual IP
vhid	vhid	Virtual Host ID
role	role	Role (Master/Backup)
pip	pip	Peer IP

**Note:** [status status] the former status is command, and the latter is value. The value could reference the description below.

## 8.5 RIP Configuration

In **Vigor3900@config-app#** , users could use [rip] command to configure Rip, then use [show] to get the profile list in the directory or use the [get] or [pf] command to configure the Rip details information.

**Vigor3900@config-app#** rip

**Vigor3900@config-app-rip#** <command>

\*\*[get] Get Rip detail configurations

**\*\*[pf]** Add or remove more profile to support RIP

**example-**

**Vigor3900@config-app#** rip  
**Vigor3900@config-app-rip#** show

```
Vigor3900@config-app-rip#show
status          : Disable
pf              : wan
```

**Vigor3900@config-app-rip#** get

```
Vigor3900@config-app-rip#get
status          : Disable
pf              : wan
```

**Vigor3900@config-app-rip#** pf [add][remove] <profilename>  
**\*\*[add]** Add profile to support RIP  
**\*\*[remove]** Remove more profile to support RIP

## 8.6 SIP ALG

In **Vigor3900@config-app#** , users could use [sipalg] command to configure SIP ALG, then use [get] or [set] command to configure the details information.

**Vigor3900@config-app#** sipalg  
**Vigor3900@config-app-sipalg#** [get][set <command>]

**\*\*[get]** Get SIP ALG detail configurations  
**\*\*[set]** configure SIP ALG

**example-**

**Vigor3900@config-app#** sipalg  
**Vigor3900@config-app-sipalg#** get

```
Vigor3900@config-app-sipalg# get
status          : Disable
lan             : lan1
wan             : wan1
```

**Vigor3900@config-app-sipalg#** set [status status] [lan if\_inbound] [wan if\_outbound]

Command	Value	DESCRIPTION
status	status	SIP ALG status (Enable/Disable)
lan	if_inbound	LAN interface
wan	if_outbound	WAN interface

**Note:** [status status] the former status is command, and the latter is value. The value could reference the description below.

## **8.7 Wake on LAN**

In **Vigor3900@config-app#** , users could use [wol] command to configure Wake on LAN . Type the host that MAC address or IP address in the IP\_Bind\_MAC list.

**example-**

**Vigor3900@config-app#** wol [host]

**\*\*[host]** MAC address or IP address in the IP\_Bind\_MAC list [ ]

## 9.VPN

VPN(A Virtual Private Network) is the extension of a private network that encompasses links across shared or public networks like the Internet. In short, by VPN technology, user can send data between two computers across a shared or public network in a manner that emulates the properties of a point-to-point private link. Vigor3900 provides three functions in VPN – LAN-to-LAN, remote dial-in and VPN trunk. Users could use the commands below to set up the details.

Command	DESCRIPTION
lan2lan	Configure LAN-to-LAN VPN tunnel
remotedialin	Configure remote dial-in VPN tunnel
trunk	Configure VPN trunk tunnel

```
Vigor3900# configure vpn
Vigor3900@config-vpn# [lan2lan][remotedialin][trunk]
```

### 9.1 Remote Dial-in

In **Vigor3900@config-vpn#** , users could use [remotedialin] command to configure Remote dial-in , then use [ipsecremotedialin][l2tpserver][pptpserver] command to set the details. Refer to the following chapters for descriptions of commonly used commands.

```
Vigor3900# configure vpn
Vigor3900@config-vpn# remotedialin
Vigor3900@config-vpn-remotedialin# [ipsecremotedialin][l2tpserver][pptpserver]
```

#### 9.1.1 PPTP Server

In **Vigor3900@config-vpn-remotedialin#** , users could use [pptpserver] command to configure pptp server ,then use the [get] or [set] command to configure the pptp server details information.

```
**[get]   Get configuration of pptp server
**[set]   Set configuration of pptp server
```

example-

```
Vigor3900@config-vpn-remotedialin# pptpserver
Vigor3900@config-vpn-remotedialin-pptpserver# get
```

```
Vigor3900@config-vpn-remotedialin-pptpserver# get
status           : Enable
auth              : MS-CHAP-v2
encp              : 128-bit
user_auth         : Local
lanpf             : lan1
mss               : 1360
```

```
Vigor3900@config-vpn-remotedialin-pptpserver# set [status status] [auth
authentication] [encp encryption] [user_auth user_authentication] [lanpf lan_profile] [mss
pptp_mss]
```



Command	Value	DESCRIPTION
status	status	PPTP server status (Enable/Disable)
auth	authentication	the authenticate protocol of PPTP server (PAP / CHAP / MS-CHAP / MS-CHAP-v2)
encp	encryption	the encrypt length of PPTP server (40/128-bit/128-bit/ Disable)
user_auth	user_authentication	the user authenticate type of PPTP server (Local/RADIUS)
lanpf	lan_profile	Choose an interface for local IP address
mss	pptp_mss	PPTP MSS value

**Note:** [status status] the former status is command, and the latter is value. The value could reference the description below.

### 9.1.2 L2TP Server

In **Vigor3900@config-vpn-remotedialin#** , users could use [l2tpserver] command to configure L2TP Server ,then use the [get] or [set] command to configure the L2TP Server details information.

\*\*[get] Get configuration of l2tp server

\*\*[set] Set configuration of l2tp server

**example-**

**Vigor3900@config-vpn-remotedialin#** l2tpserver

**Vigor3900@config-vpn-remotedialin-l2tpserver#** get

```
Vigor3900@config-vpn-remotedialin-l2tpserver# get
status          : Enable
auth            : CHAP
user_auth       : Local
lanpf           : lan1
```

**Vigor3900@config-vpn-remotedialin-l2tpserver#** set [status status] [auth authentication] [user\_auth user\_authentication] [lanpf lan\_profile]

Command	Value	DESCRIPTION
status	status	L2TP server status (Enable/Disable)
auth	authentication	the authenticate protocol of L2TP server (PAP/CHAP)
user_auth	user_authentication	the user authenticate type of L2TP server (Local/RADIUS)
lanpf	lan_profile	Choose an interface for local IP address

**Note:** [status status] the former status is command, and the latter is value. The value could reference the description below.

### 9.1.3 L2TP/DHCP over ipsec profile

In **Vigor3900@config-vpn-remotedialin#** , users could use [ipsecremotedialin] command to configure L2TP/DHCP over ipsec profile ,then use the [get] or [set] command to configure the L2TP/DHCP over ipsec profile details information.

**\*\*[get]** Get configuration of ipsec remote dial-in

**\*\*[set]** Set configuration of ipsec remote dial-in

**example-**

**Vigor3900@config-vpn-remotedialin#** ipsecremotedialin

**Vigor3900@config-vpn-remotedialin-ipsecremotedialin#** get

**Vigor3900@config-vpn-remotedialin-ipsecremotedialin#** get

```
status_l2tp      : Disable
status_dhcp      : Disable
psk              :
localhost        : wan1
dhcp_lanif       : lan1
```

**Vigor3900@config-vpn-remotedialin-ipsecremotedialin#** set [status\_l2tp status\_l2tp]  
[status\_dhcp status\_dhcp] [psk psk] [localhost localhost] [dhcp\_lanif dhcp\_lanif]

Command	Value	DESCRIPTION
status_l2tp	status_l2tp	L2TP over IPSec status (Enable/Disable)
status_dhcp	status_dhcp	DHCP over IPSec status (Enable/Disable)
psk	psk	preshared key
ocalhost	ocalhost	local host
dhcp_lanif	dhcp_lanif	Choose an interface for DHCP over IPSec

**Note:** [status\_l2tp status\_l2tp] the former status\_l2tp is command, and the latter is value. The value could reference the description below.

## 9.2 LAN to LAN

In **Vigor3900@config-vpn#** , users could use [lan2lan] command to configure LAN to LAN, then use [ipsecpolicy][ipsecsetup][pptpdialin][pptpdialout] command to set the details.Refer to the following chapters for descriptions of commonly used commands.

**Vigor3900#** configure vpn

**Vigor3900@config-vpn#** lan2lan

**Vigor3900@config-vpn-l2l#** [ipsecpolicy][ipsecsetup][pptpdialin][pptpdialout]

### 9.2.1 IPSec Policy

In **Vigor3900@config-vpn-l2l#** , users could use [ipsecpolicy] command to configure IPSec Policy to add or delete the profile or use “show” to get the profile list in the directory. Enter the profile name to open it and modify the profile directly,

Command	DESCRIPTION
ipsecpolicy add <profileName>	Add IPSec section
ipsecpolicy delete <profileName>	Delete IPSec policy section

ipsecpolicy show	Show IPsec configuration
Ipsecpolicy <profileName>	Modify the selected profile

selected the profile, could choose the IPsec policy is initiate or not, then use the [get] or [set] command to configure the IP Sec Policy details information.

\*\*[connect] initiate ipsec policy  
 \*\*[disconnect] terminate ipsec policy

\*\*[get] Get configuration on ipsec policy  
 \*\*[set] Set configuration on ipsec policy

#### example-add:

```
Vigor3900@config-vpn-l2l# ipsecpolicy add <sectionName>
Vigor3900@config-vpn-l2l-<sectionName># connect
Vigor3900@config-vpn-l2l-<sectionName># get
```

#### example-edit:

```
Vigor3900@config-vpn-l2l# ipsecpolicy show
Vigor3900@config-vpn-l2l# ipsecpolicy <sectionName>
Vigor3900@config-vpn-l2l-<sectionName># get
```

```
Vigor3900@config-vpn-l2l-ipsecpolicy-smartc# get
status                : Disable
auth                  : RSA
leftpem               : rdialserver
psk                   : 1234
secret_type           : ESP
localhost              : wan1
localsubnet            : 192.168.3.188/24
localnext              : 0.0.0.0
remotehost             : 0.0.0.0
remotesubnet           : 0.0.0.0/32
more_remotesubnet      :
aggrmode              : Disable
localid               :
remoteid              :
phase1keylifetime      : 28800
phase2keylifetime      : 3600
pfs                   : Disable
dpd                   : Enable
dpddelay              : 30
dpdtimeout            : 120
gre                   : Disable
localgreip            : 1.1.1.1
remotegreip           : 1.1.1.2
autogrekey            : Enable
grekeyin              :
grekeyout             :
ikephase1proposal      : DES_G1
ikephase1authproposal  : ALL
ikephase2proposal      : 3DES_with_auth
ikephase2authproposal  : ALL
acceptall             : acceptall
```

**Vigor3900@config-vpn-l2l-<sectionName>#** set [status status] [auth auth] [leftpem leftpem] [psk psk] [secret\_type secret\_type] [localhost localhost] [localsubnet localsubnet] [localnext localnext] [remotehost remotehost] [remotesubnet remotesubnet] [more\_remotesubnetmore\_remotesubnet] [aggrmode aggrmode] [localid localid] [remoteid remoteid] [phase1keylifetime phase1keylifetime] [phase2keylifetime phase2keylifetime][pfs pfs] [dpd dpd][dpddelay dpddelay] [dpdtimeout dpdtimeout] [dhcpcveripsec dhcpcveripsec] [l2tpveripsec l2tpveripsec] [gre gre] [localgreip localgreip] [remotegreip remotegreip] [autogrekey autogrekey] [grekeyin grekeyin] [grekeyout grekeyout] [ikephase1proposal ikephase1proposal] [ikephase1authproposal ikephase1authproposal] [ikephase2proposal ikephase2proposal] [ikephase2authproposal ikephase2authproposal] [acceptall acceptall]

Command	Value	DESCRIPTION
status	status	admin status (Enable/Disable)
auth	auth	auth type (PSK/RSA)
leftpem	leftpem	leftpem
psk	psk	preshared key
secret_type	secret_type	Security protocol (ESP/AH)
localhost	localhost	local host
localsubnet	localsubnet	local subnet
localnext	localnext	local next hop
remotehost	remotehost	remote host
remotesubnet	remotesubnet	remote subnet
more_remotesubnet	more_remotesubnet	More remote subnet
aggrmode	aggrmode	Aggressive mode (Enable/Disable)
localid	localid	local peer id
remoteid	remoteid	remote peer id
phase1keylifetime	phase1keylifetime	IKE phase1 key life time
phase2keylifetime	phase2keylifetime	IKE phase2 key life time
pfs	pfs	perfect forward secrecy status (Enable/Disable)
dpd	dpd	dead peer detection status (Enable/Disable)
dpddelay	dpddelay	DPD delay
dpdtimeout	dpdtimeout	DPD timeout
dhcpcveripsec	dhcpcveripsec	DHCP Over IPSec (Enable/Disable)
l2tpveripsec	l2tpveripsec	L2TP Over IPSec (Enable/Disable)
gre	gre	GRE function (Enable/Disable)
localgreip	localgreip	local GRE IP
remotegreip	remotegreip	remote GRE IP
autogrekey	autogrekey	auto generate GRE key (Enable/ Disable)
grekeyin	grekeyin	GRE in key
grekeyout	grekeyout	GRE out key

ikephase1proposal	ikephase1proposal	IKE phase1 proposal (DES_G1/DES_G2/DES_G5/DES_G14/ 3DES_G1/3DES_G2/3DES_G5/3DES_G14/ AES128_G1/AES128_G2/AES128_G5/AES128_G14/ AES192_G1/AES192_G2/AES192_G5/AES192_G14/ AES256_G1/AES256_G2/AES256_G5/AES256_G14)
ikephase1authproposal	ikephase1authproposal	IKE phase1 authentication (ALL/MD5/SHA1)
ikephase2proposal	ikephase2proposal	IKE phase2 proposal (DES_without_auth/DES_with_auth/ 3DES_without_auth/3DES_with_auth/ AES128_without_auth/AES128_with_auth/ AES192_without_auth/AES192_with_auth/ AES256_without_auth/AES256_with_auth)
ikephase2authproposal	ikephase2authproposal	IKE phase2 authentication (ALL/MD5/SHA1)
acceptall	acceptall	accepted proposal for dial-in (acceptall/acceptabove)

**Note:** [status status] the former status is command, and the latter is value. The value could reference the description below.

**example-edit:**

**Vigor3900@config-vpn-l2l#** ipsecpolicy delete<sectionName>

### 9.2.2 PPTP dial-out

In **Vigor3900@config-vpn-l2l#** , users could use [pptpdialout] command to configure PPTP dial-out to add or delete the profile or use “show” to get the profile list in the directory. Enter the profile name to open it and modify the profile directly,

Command	DESCRIPTION
pptpdialout add <profileName>	Add PPTP dial-out tunnel
pptpdialout delete <profileName>	Delete PPTP dial-out tunnel
pptpdialout show	Show PPTP dial-out tunnel configuration
pptpdialout <profileName>	Modify the selected tunnel

selected the profile, could choose the IPSec policy is initiate or not, then use the [get] or [set] command to configure the IP Sec Policy details information.

\*\*[connect] initiate PPTP LAN-to-LAN policy

\*\*[disconnect] terminate LAN-to-LAN policy

\*\*[get] Get configuration on pptp dial-out tunnel

\*\*[set] Set configuration on pptp dial-out tunnel

**example-add:**

Vigor3900@config-vpn-l2l# pptpdialout add <sectionName>  
Vigor3900@config-vpn-l2l-pptpdialout-<sectionName># connect

example-edit:

Vigor3900@config-vpn-l2l# pptpdialout show  
Vigor3900@config-vpn-l2l# pptpdialout <sectionName>  
Vigor3900@config-vpn-l2l-pptpdialout-<sectionName># get

```
status          : Disable
alwayson        : Disable
serverip        : 3.4.5.6
username        :
password        : 444
localsubnet     : 2.3.4.0/24
remotesubnet    : 1.2.3.0/24
```

Vigor3900@config-vpn-l2l-pptpdialout-<sectionName># set [status status] [alwayson alwayson] [serverip serverip] [username username] [password password] [localsubnet localsubnet] [remotesubnet remotesubnet]

Command	Value	DESCRIPTION
status	status	admin status (Enable/Disable)
alwayson	alwayson	enable always-on or not (Enable/Disable)
serverip	serverip	PPTP server IP address
username	username	username
password	password	password
localsubnet	localsubnet	local subnet
remotesubnet	remotesubnet	remote subnet

**Note:** [status status] the former status is command, and the latter is value. The value could reference the description below.

example-delete:

Vigor3900@config-vpn-l2l# pptpdialout delete <profileName>

### 9.2.3 PPTP dail-in

In **Vigor3900@config-vpn-l2l#** , users could use [pptpdial in] command to configure PPTP dail-in to add or delete the profile or use “show” to get the profile list in the directory. Enter the profile name to open it and modify the profile directly.

Command	DESCRIPTION
pptpdial in add <profileName>	Add PPTP dial-in tunnel
pptpdial in delete <profileName>	Delete PPTP dial- in tunnel
pptpdial in show	Show PPTP dial- in tunnel configuration
pptpdial in <profileName>	Modify the selected tunnel

selected the profile, then use the [get] or [set] command to configure the PPTP dail-in details information, could also use the [disconnect] command to terminate the tunnel.

**\*\*[get]** Get configuration on pptp dial-in tunnel  
**\*\*[set]** Set configuration on pptp dial-in tunnel  
**\*\*[disconnect]** terminate LAN-to-LAN policy

**example-add:**

**Vigor3900@config-vpn-l2l#** pptpdial in add <sectionName>  
**Vigor3900@config-vpn-l2l-pptpdialin-<sectionName>#** set [status status] [username username] [localsubnet localsubnet] [remotesubnet remotesubnet]

**example-edit:**

**Vigor3900@config-vpn-l2l#** pptpdial in show  
**Vigor3900@config-vpn-l2l#** pptpdial in <sectionName>  
**Vigor3900@config-vpn-l2l-pptpdialin-<sectionName>#** get

```
status          : Disable
username        : testuser1
localsubnet     : 192.168.0.222/24
remotesubnet    : 255.111.222.222/24
```

**Vigor3900@config-vpn-l2l-pptpdialin-<sectionName>#** set [status status] [username username] [localsubnet localsubnet] [remotesubnet remotesubnet]

Command	DESCRIPTION
status	admin status (Enable/Disable)
username	username
localsubnet	local subnet
remotesubnet	remote subnet

**Note:** [status status] the former status is command, and the latter is value. The value could reference the description below.

**example-delete:**

**Vigor3900@config-vpn-l2l#** pptpdial in delete <sectionName>

## 9.3 VPN TRUNK Manager

In **Vigor3900@config-vpn#** , users could use [trunk] command to configure VPN TRUNK Manager , then use [ipseclbpool][ipseclbrule] command to set the details.Refer to the following chapters for descriptions of commonly used commands.

**Vigor3900#** configure vpn  
**Vigor3900@config-vpn#** trunk  
**Vigor3900@config-vpn-trunk#** [ipseclbpool][ipseclbrule]

### 9.3.1 Load Balance Rule

In **Vigor3900@config-vpn-trunk#** , users could use [ipseclbrule] command to configure Load Balance Rule to add or delete the profile or use “show” to get the profile list in the directory. Enter the profile name to open it and modify the profile directly.

Command	DESCRIPTION
Ipseclbrule add <sectionName>	Add load balancer rule
Ipseclbrule delete <sectionName>	Delete load balancer rule
Ipseclbrule show	Show load balancer rule
Ipseclbrule <sectionName>	Modify the selected rule

selected the profile, then use the [get] or [set] command to configure the load balancer rule information.

\*\*[get] Get load balancer rule configuration

\*\*[set] Set load balancer rule configuration

#### example-add:

**Vigor3900@config-vpn-trunk# ipseclbrule add <sectionName>**

**Vigor3900@config-vpn-ipsec-trunk-lb-rule-<sectionName># set [status status] [proto protocol] [sip src\_ip] [smask src\_mask] [dip dest\_ip] [dmask dest\_mask] [dport dest\_port] [dport\_end dest\_port\_end] [pool lb\_pool]**

#### example-edit:

**Vigor3900@config-vpn-trunk# ipseclbrule show**

**Vigor3900@config-vpn-trunk# ipseclbrule <sectionName>**

**Vigor3900@config-vpn-ipsec-trunk-lb-rule-<sectionName># get**

```
status      : Enable
proto       : ALL
sip         :
smask       :
dip         :
dmask       :
dport       :
dport_end   :
pool        :
```

**Vigor3900@config-vpn-ipsec-trunk-lb-rule-<sectionName># set [status status] [proto protocol] [sip src\_ip] [smask src\_mask] [dip dest\_ip] [dmask dest\_mask] [dport dest\_port] [dport\_end dest\_port\_end] [pool lb\_pool]**

Command		DESCRIPTION
status	status	status (Enable/Disable)
proto	protocol	protocol(ALL/TCP/UDP/TCP/UDP/ICMP/FTP /TFTP/HTTP/SMTP/POP3)
sip	src_ip	source IP address
smask	src_mask	source mask
dip	dest_ip	destination IP address
dmask	dest_mask	destination mask
dport	dest_port	destination port
dport_end	dest_port_end	destination port end



pool	lb_pool	load balance pool
------	---------	-------------------

**Note:** [status status] the former status is command, and the latter is value. The value could reference the description below.

**example-delete:**

**Vigor3900@config-vpn-trunk#** ipseclbrule delete <sectionName>

### 9.3.2 Load Balance Pool

In **Vigor3900@config-vpn-trunk#** , users could use [ ipseclbpool ] command to configure Load Balance Pool to add or delete the profile or use “show” to get the profile list in the directory. Enter the profile name to open it and modify the profile directly.

Command	DESCRIPTION
ipseclbpool add <sectionName>	Add load balancer pool
ipseclbpool delete <sectionName>	Delete load balancer pool
ipseclbpool show	Show load balancer pool
ipseclbpool <sectionName>	Modify the selected pool

selected the profile, then use the [get] or [set] command to configure the Load Balance Pool information or use the [add] or [remove] command to set the load balancer loadbalance interface.

\*\*[get] get load balancer pool configuration

\*\*[set] Set load balancer pool configuration

\*\*[add] add load balancer loadbalance interface

\*\*[remove] remove load balancer pool loadbalance interface

**example-add:**

**Vigor3900@config-vpn-trunk#** ipseclbpool add <sectionName>

**Vigor3900@config-vpn-trunk-ipsec-lb-pool-<sectionName>#** set [lbif lb\_iface]

**Vigor3900@config-vpn-trunk-ipsec-lb-pool-<sectionName>#** add <lb\_iface>

**example-edit:**

**Vigor3900@config-vpn-trunk#** ipseclbpool show

**Vigor3900@config-vpn-trunk#** ipseclbpool <sectionName>

**Vigor3900@config-vpn-trunk-ipsec-lb-pool-<sectionName>#** get

```
Vigor3900@config-vpn-trunk-ipsec-lb-pool-pp2# get
lbif          :
```

**Vigor3900@config-vpn-trunk-ipsec-lb-pool-<sectionName>#** add <lb\_iface>

**Vigor3900@config-vpn-trunk-ipsec-lb-pool-<sectionName>#** set [lbif lb\_iface]

\*\*[lb\_iface] load balance interface

**example-delete:**

**Vigor3900@config-vpn-trunk#** ipseclbpool delete <sectionName>

## 10. Bandwidth Manager

Vigor3900 provides three functions in Bandwidth Manager – bandwidth limit , Quality of Service and sessions limit .Users could use the commands below to set up the details.

Command	DESCRIPTION
bandwidth_limit	Configure bandwidth limit profile
qos	Configure Wan QoS Service
sesslimit	Configure sessions limit profile

**Vigor3900#** configure bandwidth

**Vigor3900@config-bandwidth#** [bandwidth\_limit][qos][sesslimit]

### 10.1 QoS

In **Vigor3900@config-bandwidth#** , users could use **[qos]** command to configure Quality of Service , then use **[incoming-class][incoming-filter][outgoing-class][outgoing-filter]** command to set the details.Refer to the following chapters for descriptions of commonly used commands.

Command	DESCRIPTION
incoming-class	Config QoS incoming class
incoming-filter	Config QoS incoming filter
outgoing-class	Config QoS outgoing class
outgoing-filter	Config QoS outgoing filter

**Vigor3900@config-bandwidth#** qos

**Vigor3900@config-bw-qos#** [incoming-class][incoming-filter][outgoing-class][outgoing-filter]

#### 10.1.1 Incoming Class

In **Vigor3900@config-bw-qos#**, users could use [ incoming-class] command to configure Incoming class ,then could choose the [class\_ratectrl] command to Configure incoming rate control for filter, use the [ttl\_ratectrl] command to Configure Qos incoming total rate control.

Command	DESCRIPTION
class_ratectrl	Configure incoming rate control for filter
ttl_ratectrl	Configure Qos incoming total rate control

**Vigor3900@config-bw-qos#** incoming-class

**Vigor3900@config-bw-qos-in-class#** [class\_ratectrl][ttl\_ratectrl]

selected the profile, then use the [get] or [set] command to configure the details information.

### example-class\_ratectrl

Vigor3900@config-bw-qos-in-class# class\_ratectrl <SectionName>

Vigor3900@config-bw-qos-in-class-ratectrl-<SectionName># [get][set]

\*\*[get] Show Queue Configuration

\*\*[set] configure Queue weight

Vigor3900@config-bw-qos-in-class-ratectrl-<SectionName># get

```
Vigor3900@config-bw-qos-in-class-ratectrl-incoming_class0# get
mode          : Disable
rate          : 0
```

Vigor3900@config-bw-qos-in-class-ratectrl-<SectionName># set [mode enable]  
[rate rate]

\*\*[mode enable] QoS Shaper Administrative Configuration (Enable/Disable)

\*\*[rate rate] policer rate in bps

**Note:** [mode enable] the former mode is command, and the latter is value.

If you don't know the class ratectrl what filter have, you can use [show] to get incoming rate control for filter.

Vigor3900@config-bw-qos-in-class# class\_ratectrl show

```
Vigor3900@config-bw-qos-in-class# class_ratectrl show
adm_policer   mode      rate
incoming_class0  disable    0
incoming_class1  disable    0
```

### example-ttl\_ratectrl

Vigor3900@config-bw-qos-in-class# ttl\_ratectrl [get][set <command>]

\*\*[get] Show Qos incoming total rate control configuration

\*\*[set] configure incoming total rate control

Vigor3900@config-bw-qos-in-class# ttl\_ratectrl get

```
Vigor3900@config-bw-qos-in-class# ttl_ratectrl get
mode          : Disable
rate          : 0
```

Vigor3900@config-bw-qos-in-class# ttl\_ratectrl set [mode enable] [rate rate]

\*\*[mode enable] Ingress rate control Administrative Configuration (Enable/Disable)

\*\*[rate rate] Ingress rate in Kbps

**Note:** [mode enable] the former mode is command, and the latter is value.

### 10.1.2 Incoming Filter

In **Vigor3900@config-bw-qos#**, users could use [incoming-filter] command to configure Incoming Filter ,then use [ftrule] to Configure incoming filter rule.

```
Vigor3900@config-bw-qos# incoming-filter  
Vigor3900@config-bw-qos-in-filter# ftrule <SectionName>
```

selected the profile, then use the [get] or [set] command to configure the details information.

```
Vigor3900@config-bw-qos-in-filter-<SectionName># [get][set]
```

```
**[get] Show filter rule related configuration  
**[set] configure filter rule related parameter
```

example:

```
Vigor3900@config-bw-qos# incoming-filter  
Vigor3900@config-bw-qos-in-filter# ftrule <SectionName>  
Vigor3900@config-bw-qos-in-filter-<SectionName># get
```

```
policer      : no_rate_control  
drop         : Disable  
reserved     : Disable  
ipproto      : None  
saddr        : 0.0.0.0  
saddr_mask   : 0.0.0.0  
sport_enable : Disable  
sport_min    : 0  
sport_max    : 0  
daddr        : 0.0.0.0  
daddr_mask   : 0.0.0.0  
dport_enable : Disable  
dport_min    : 0  
dport_max    : 0
```

```
Vigor3900@config-bw-qos-in-filter-<SectionName># set [policer policer] [drop drop]  
[reserved reserved] [ipproto ipproto] [saddr saddr] [saddr_mask saddr_mask][sport_enable  
sport_enable] [sport_min sport_min][sport_max sport_max] [daddr daddr] [daddr_mask  
daddr_mask] [dport_enable dport_enable] [dport_min dport_min] [dport_max dport_max]
```

Command	Value	DESCRIPTION
policer	policer	select the associated adm policer (no_rate_control/incoming_class0/incoming_class1)
drop	drop	Drop received packeted (Enable/Disable)
reserved	reserved	Reserved received packeted (Enable/Disable)
ipproto	ipproto	IP proto (TCP/IGMP/ICMP/UDP/None)
saddr	saddr	source IP address
saddr_mask	saddr_mask	source IP address mask
sport_enable	sport_enable	source port administrative status (Enable/Disable)

sport_min	sport_min	min source port
sport_max	sport_max	Max source port
daddr	daddr	destination IP address
daddr_mask	daddr_mask	destination IP address mask
dport_enable	dport_enable	destination port administrative status (Enable/Disable)
dport_min	dport_min	min destination port
dport_max	dport_max	Max destination port

**Note:** [policer policer] the former policer is command, and the latter is value. The value could reference the description below.

If you don't know the current incoming filter rule configuration , you can use [show] to get this information.

**Vigor3900@config-bw-qos-in-filter#** ftrule | show

```
Vigor3900@config-bw-qos-in-filter# ftrule show
adm_tcam      policer      drop      reserved
filter_rule_0 no_rate_ctrl disable    disable
filter_rule_1 no_rate_ctrl disable    disable
filter_rule_2 no_rate_ctrl disable    disable
filter_rule_3 no_rate_ctrl disable    disable
filter_rule_4 no_rate_ctrl disable    disable
filter_rule_5 no_rate_ctrl disable    disable
filter_rule_6 no_rate_ctrl disable    disable
filter_rule_7 no_rate_ctrl disable    disable
filter_rule_8 no_rate_ctrl disable    disable
filter_rule_9 no_rate_ctrl disable    disable
filter_rule_10 no_rate_ctrl disable    disable
```

### 10.1.3 Outgoing Class

In **Vigor3900@config-bw-qos#**, users could use [outcoming-class] command to configure outgoing class ,then could choose the [outgoing\_ratectrl] [outgoing\_ttlratectrl] [queue] to set the details information.

Command	DESCRIPTION
outgoing_ratectrl	Configure outgoing class rate control
outgoing_ttlratectrl	Configure outgoing total rate control
queue	Configure outgoing low queue weight

**Vigor3900@config-bw-qos#** outcoming-class

**Vigor3900@config-bw-qos-out-class#** [outgoing\_ratectrl][outgoing\_ttlratectrl][queue]

selected the profile, then use the [get] or [set] command to configure the details information.

#### **example- outgoing\_ratectrl**

**Vigor3900@config-bw-qos#** outcoming-class

**Vigor3900@config-bw-qos-out-class#** outgoing\_ratectrl <SectionName>

**Vigor3900@config-bw-qos-out-class-<SectionName># [get][set]**

**\*\*[get]** Show Queue Configuration

**\*\*[set]** configure Queue weight

**Vigor3900@config-bw-qos-out-class-<SectionName># get**

```
mode          : Disable
rate          : 0
desc          : Control queue 7(highest)
```

**Vigor3900@config-bw-qos-out-class-ratectrl-<SectionName># set [mode enable]  
[rate rate]**

**\*\*[mode enable]** Egress rate control administrative status (Enable/Disable)

**\*\*[rate rate]** Egress rate in Kbps

**Note:** [mode enable] the former mode is command, and the latter is value.

If you don't know the class ratectrl what filter have, you can use [show] to get incoming rate control for filter.

**Vigor3900@config-bw-qos-out-class# outgoing\_ratectrl show**

```
Vigor3900@config-bw-qos-out-class# outgoing_ratectrl show
sch_shaper    mode      rate      desc
outgoing_class0  disable  0        Control queue 7(highest)
outgoing_class1  disable  0        Control queue 6(higher)
outgoing_class2  disable  0        Control queue 1-5(low)
```

### **example-ttl\_ratectrl**

**Vigor3900@config-bw-qos# outcoming-class**

**Vigor3900@config-bw-qos-in-class# ttl\_ratectrl [get][set <command>]**

**\*\*[get]** Show Qos incoming total rate control configuration

**\*\*[set]** configure incoming total rate control

**Vigor3900@config-bw-qos-in-class# ttl\_ratectrl get**

```
Vigor3900@config-bw-qos-in-class# ttl_ratectrl get
mode          : Disable
rate          : 0
```

**Vigor3900@config-bw-qos-in-class# ttl\_ratectrl set [mode enable] [rate rate]**

**\*\*[mode enable]** Ingress rate control Administrative Configuration (Enable/Disable)

**\*\*[rate rate]** Ingress rate in Kbps

**Note:** [mode enable] the former mode is command, and the latter is value.

## **10.1.4 Outgoing Filter**

In **Vigor3900@config-bw-qos#**, users could use [outcoming-filter] command to configure outcoming-filter , then use the [outcoming\_filter] command to add or delete the profile or use “show” to get the profile list in the directory. Enter the profile name to open it and modify the profile directly.

Command	DESCRIPTION
outgoing_filter add <profileName>	Add new packet marking profile
outgoing_filter delete <profileName>	Delete packet marking profile
outgoing_filter show	Show current packet marking configuration
outgoing_filter <profileName>	Modify the selected profile

selected the profile, then use the [get] or [set] command to configure the packet marking information.

\*\*[get] Show packet marking rule  
 \*\*[set] configure packet marking rule

#### example-add

**Vigor3900@config-bw-qos#** outcoming-filter  
**Vigor3900@config-bw-qos-out-filter#** outgoing\_filter add <SectionName>  
**Vigor3900@config-bw-qos-out-filter-<SectionName>#** set [status status] [srcip soruceip] [destip destip] [servicetype servicetype] [queue queue]

#### example-edit

**Vigor3900@config-bw-qos#** outcoming-filter  
**Vigor3900@config-bw-qos-out-filter#** outgoing\_filter <SectionName>  
**Vigor3900@config-bw-qos-out-filter-<SectionName>#** get

```
status          : disable
srcip           : 0.0.0.0/0
destip          : 0.0.0.0/0
servicetype     : Any
queue          : 0
```

**Vigor3900@config-bw-qos-out-filter-<SectionName>#** set [status status] [srcip soruceip] [destip destip] [servicetype servicetype] [queue queue]

Command	Value	DESCRIPTION
status	status	Enable or disable outgoing filter (Enable/Disable)
srcip	srcip	source IP address or IP address with mask bit
destip	destip	destination IP address or IP address with mask bit
servicetype	servicetype	User Defined Service Type
queue	queue	queue number (0/1/2/3/4/5/6/7)

**Note:** [status status] the former status is command, and the latter is value. The value could reference the description below.

#### example-delete:

**Vigor3900@config-bw-qos-out-filter#** outgoing\_filter delete <SectionName>

## 10.2 Session Limit

In **Vigor3900@config-bandwidth#** , users could use [sesslimit] command to configure sessions limit to add or delete the profile or use “show” to get the profile list in the directory. Enter the profile name to open it and modify the profile directly.

Command	DESCRIPTION
sessions limit add <sectionName>	Add sessions limit profile
sessions limit delete <sectionName>	Delete sessions limit profile
sessions limit show	Show sessions limit profile configuration
sessions limit <sectionName>	Modify the selected profile configuration

selected the profile, then use the [get] or [set] command to configure the address mapping information.

**\*\*[get]** Show sesslimit profile  
**\*\*[set]** configure sesslimit

### example-add:

**Vigor3900@config-bandwidth#** sesslimit add <sectionName>  
**Vigor3900@config-bw-sesslimit-<profile>#** set [status status] [srcip srcip] [session session]

### example-edit:

**Vigor3900@config-bandwidth#** sesslimit show  
**Vigor3900@config-bandwidth#** sesslimit <sectionName>  
**Vigor3900@config-bw-sesslimit-<profile>#** get

```
status          : Disable
srcip           : 0.0.0.0/0
session         : 500
```

**Vigor3900@config-bw-sesslimit-<profile>#** set [status status] [srcip srcip] [session session]

Command	Command	DESCRIPTION
status	status	Sessions limit profile admin status (Enable/Disable)
srcip	srcip	Soruce IP address with mask bit
session	session	Maximum Connection Sessions

**Note:** [status status] the former status is command, and the latter is value. The value could reference the description below.

### example-delete:

**Vigor3900@config-bandwidth#** sesslimit delete <sectionName>

## 10.3 Bandwidth Limit



In **Vigor3900@config-bandwidth#** , users could use [bandwidth\_limit] command to configure bandwidth limit to add or delete the profile or use “show” to get the profile list in the directory. Enter the profile name to open it and modify the profile directly.

Command	DESCRIPTION
bandwidth_limit add <sectionName>	Add a bandwidth limit profile
bandwidth_limit delete <sectionName>	Delete a bandwidth limit profile
bandwidth_limit show	Show specific bandwidth limit profile
bandwidth_limit <sectionName>	Modify the selected profile configuration

selected the profile, then use the [get] or [set] command to configure the bandwidth limit information.

```
**[get] bandwidth limit Configuration
**[set] bandwidth limit Configuration
```

#### example-add:

```
Vigor3900@config-bandwidth# bandwidth_limit add <sectionName>
Vigor3900@config-bw-limit-<profile># set [start_ip start_ip] [end_ip end_ip] [tx tx] [rx rx]
```

#### example-edit:

```
Vigor3900@config-bandwidth# bandwidth_limit show
Vigor3900@config-bandwidth# bandwidth_limit <sectionName>
Vigor3900@config-bw-limit-<profile># get
```

```
start_ip      : 0.0.0.0
end_ip        : 0.0.0.0
tx            : 0
rx            : 0
```

```
Vigor3900@config-bw-limit-<profile># set [start_ip start_ip] [end_ip end_ip] [tx tx] [rx rx]
```

Command	Value	DESCRIPTION
start_ip	start_ip	Source start IP address
end_ip	end_ip	Source end IP address
tx	tx	Transmit rate in Kbps
rx	rx	Receive rate in Kbps

**Note:** [start\_ip start\_ip] the former start\_ip is command, and the latter is value. The value could reference the description below.

#### example-delete:

```
Vigor3900@config-bandwidth# bandwidth_limit delete <sectionName>
```

# 11. System Management

For the system setup, there are several items that you have to know the way of configuration,Vigor3900 provides many functions in system management .Users could use the commands below to set up the details.

Command	DESCRIPTION
acc_ctrl	Configure Access control
admin_passwd	Configure Administrator Password
cmm	Connect to Fast Forward Conntrack module monitor
config	Configuration Backup and Restore
firmware	manage firmware
mailalert	Configure Mail Alert
ntpcient	Configure NTP client
reboot	system reboot
snmpagent	Configure SNMP agent
syslogd	Configure Syslogd Server

**Vigor3900#** configure system  
**Vigor3900@config-sys#** <command>

## 11.1 Administrator Password

In **Vigor3900@config-sys#** , use the [admin\_passwd] command to configure administrator password and type the old password, new password, confirm password.

**Vigor3900@config-sys#** admin\_passwd <oldpw> <newpw> <confpw>

\*\*[oldpw] Old password  
\*\*[newpw] New password  
\*\*[confpw] Confirm password

## 11.2 Configuration Backup

In **Vigor3900@config-sys#** , users could use [config] command to configure Configuration Backup , then use the Below shows the menu items to set details information.

**Vigor3900@config-sys#** config <command>

Command	DESCRIPTION
automatic	Automatic backup configuration
backup	Backup configuration to remote TFTP server
default_set	Customized default configuration
local	Create or delete configuration backup in local storage
restore	Restore configuration from remote TFTP server

### example-automatic

**Vigor3900@config-sys#** config automatic

**\*\*[get]** Get automatic configuration

**\*\*[set]** Set automatic configuration

**Vigor3900@config-sys#** config automatic get

```
status          : Disable
interval        : weekly
date_time       : 06:52:00
date_day        : 1
date_weekday    : Sun
```

**Vigor3900@config-sys#** config automatic set [status status] [interval interval]  
[date\_time date\_time] [date\_day date\_day] [date\_weekday date\_weekday]

Command	Value	DESCRIPTION
status	status	group status (Enable/Disable)
interval	interval	automatic backup interval (daily/weekly/monthly)
date_time	date_time	backup time in a day
date_day	date_day	date_day
date_weekday	date_weekday	date_weekday (Mon/Tue/Wed/Thu/Fri/Sat/Sun)

**Note:** [status status] the former status is command, and the latter is value. The value could reference the description below.

### example- backup

**Vigor3900@config-sys#** config backup [serverip] [filename]

**\*\*[serverip]** TFTP Server IP address [192.168.1.10]

**\*\*[filename]** Filename on server [cfg.tar.gz]

### example- default\_set

**Vigor3900@config-sys#** config default\_set [disable][enable][get]

**\*\*[disable]** Disable customized default configuration

**\*\*[enable]** Enable customized default configuration

**\*\*[get]** Display current customized default status

### example- local

**Vigor3900@config-sys#** config local <command>

Command	DESCRIPTION
backup	Create configuration backup in local storage
delete	Delete configuration backups in local storage

download	Download configuration backup from local storage to TFTP server
list	List configuration backups in local storage
restore	Restore backup configuration from local storage
upload	Upload configuration backup file from TFTP server to local storage

### **example- restore**

**Vigor3900@config-sys#** config restore [serverip] [filename]

\*\*[serverip] TFTP Server IP address [192.168.1.10]

\*\*[filename] Filename on server [cfg.tar.gz]

## **11.3 Syslog**

In **Vigor3900@config-sys#** , use the [syslogd] command to configure syslog and type the [get] or [set] command to configure the details information.

**Vigor3900@config-sys#** syslogd [get][set]

\*\*[get] Get Syslogd configuration

\*\*[set] Set Syslogd Configuration

### **example-**

**Vigor3900@config-sys#** syslogd get

```
Vigor3900@config-sys# syslogd get

status           : Both
ip               : 172.17.5.166
port             : 514
routername      : Vigor
firewall         : Enable
vpn              : Enable
useraccess       : Enable
wan              : Enable
others           : Enable
```

**Vigor3900@config-sys#** syslogd set [status status] [ip remotehost] [port remoteport] [routername routername] [firewall firewall] [vpn vpn] [useraccess useraccess] [wan wanlog] [others others]

Command	Value	DESCRIPTION
status	status	syslogd status(Disable/Remote/Local/Both)
ip	remotehost	Remote Syslog Server IP
port	remoteport	Remote Syslog Server Port
routername	routername	Router Name
firewall	firewall	Enable Firewall syslog message (Enable/Disable)

vpn	vpn	Enable VPN syslog message (Enable/Disable)
useraccess	useraccess	Enable User Access syslog message(Enable/Disable)
wan	wanlog	Enable WAN Log syslog message(Enable/Disable)
others	others	Enable all other log message (Enable/Disable)

**Note:** [status status] the former status is command, and the latter is value. The value could reference the description below.

## 11.4 Mail Alert

In **Vigor3900@config-sys#** , use the [mailalert ] command to configure Mail Alert and type the [get],[set],[mailto] command to configure the details information.

**Vigor3900@config-sys#** mailalert [get][set][mailto]

\*\*[get]      Get Mail Alert Configuration  
 \*\*[mailto]    Configure option -mailto in Mail Alert  
 \*\*[set]      Set Mail Alert Configuration

**example-**

**Vigor3900@config-sys#** mailalert get

```
Vigor3900@config-sys# mailalert get

status           : Disable
mailfrom         : vigor3900@draytek.com
mailto           :
smtpport         : 25
smtpserver       :
user_login       : Disable
user_name        :
```

**Vigor3900@config-sys#** mailalert mailto [add] [remove]<member Email>

\*\*[member] option - mailto

**Vigor3900@config-sys#** mailalert set [status status] [mailfrom mailfrom] [smtpport smtpport] [smtpserver smtpserver] [user\_login user\_login] [user\_name user\_name] [user\_password user\_password]

Command	Value	DESCRIPTION
status	status	Mail Alert status (Enable/Disable)
mailfrom	mailfrom	Mail From
smtpport	smtpport	SMTP Port
smtpserver	smtpserver	SMTP Server
user_login	user_login	SMTP Server is need login or not (Enable/Disable)
user_name	user_name	SMTP Server is need login username
user_password	user_password	SMTP Server is need login password

**Note:** [status status] the former status is command, and the latter is value. The value could reference the description below.

## 11.5 Time and Date

In **Vigor3900@config-sys#** , use the [ntpcient] command to configure time and date and type the [get],[set],[manual] command to configure the details information.

**Vigor3900@config-sys#** ntpclient [get][manual][set]

\*\*[get] Get ntp client configuration

\*\*[set] Set ntp client configuration

\*\*[manual] manual set current time and date

**example-**

**Vigor3900@config-sys#** ntpclient get

```
Vigor3900@config-sys# ntpclient get
status          : Browser
server          : pool.ntp.org
port            : 123
interval        : 600
zone            : Taipei
daylight        : Enable
```

**Vigor3900@config-sys#** ntpclient manual <date>

\*\*<date> MMDDhhmmYYYY

**Vigor3900@config-sys#** ntpclient set [status status] [server server] [port port] [interval interval] [zone zone] [daylight daylight]

Command	Value	DESCRIPTION
status	status	ntpcient status (NTP/Browser)
server	server	NTP server IP/host
port	port	NTP server port
interval	interval	request interval
zone	zone	time zone (Eniwetok/Samoa/Hawaii/Alaska/PacificTime/Tijuana/MountainTime/Arizona/CentralTime/Saskatchewan/MexicoCity/EasternTime/Indiana/Bogota/AtlanticTime/Caracas/Santiago/Newfoundland/Brazilia/Georgetown/Mid-Atlantic/Azores/Greenwich/London/Casablanca/Belgrade/Budapest/Sarajevo/Warsaw/Brussels/Madrid/Amsterdam/Rome/Bucharest/Cairo/Helsinki/Athens/Jerusalem/Harare/Moscow/Volgograd/Baghdad/Nairobi/Tehran/AbuDhabi/Baku/Kabul/Ekaterinburg/Islamabad/Bombay/Madras/Astana/Colombo/Bangkok/Beijing/HongKong/Singapore/Taipei/Perth/Seoul/Tokyo/Yakutsk/Darwin/Adelaide/Melbourne/Brisbane/Hobart/Vladivostok/Guam/Magadan/NewCaledonia/Fiji/Auckland)
daylight	daylight	Daylight status (Enable/Disable)

## 11.6 Access control

In **Vigor3900@config-sys#** , use the [acc\_ctrl ] command to configure Access control and type the [get],[set] command to configure the details information.

**Vigor3900@config-sys#** acc\_ctrl [get][set]

\*\*[get] Show access control configuration

\*\*[set] configure access control

**example-**

**Vigor3900@config-sys#** acc\_ctrl get

```
Vigor3900@config-sys# acc_ctrl get
web_allow      : Enable
web_port       : 80
telnet_allow   : Enable
telnet_port    : 23
ssh_allow      : Enable
ssh_port       : 22
https_allow    : Enable
https_port     : 443
user_define_ip : Disable
allow_ip1      : 0.0.0.0/0
allow_ip2      : 0.0.0.0/0
allow_ip3      : 0.0.0.0/0
wan_ping_allow : Enable
lan_ping_allow : Disable
```

**Vigor3900@config-sys#** acc\_ctrl set [web\_allow web\_allow] [web\_port web\_port] [telnet\_allow telnet\_allow] [telnet\_port telnet\_port] [ssh\_allow ssh\_allow] [ssh\_port ssh\_port] [https\_allow https\_allow] [https\_port https\_port] [user\_define\_ip user\_define\_ip] [allow\_ip1 allow\_ip1] [allow\_ip2 allow\_ip2] [allow\_ip3 allow\_ip3] [wan\_ping\_allow wan\_ping\_allow] [lan\_ping\_allow lan\_ping\_allow]

Command	Command	DESCRIPTION
web_allow	web_allow	Enable or disable block web access (Enable/Disable)
web_port	web_port	Config user define web service allow port
telnet_allow	telnet_allow	Enable or disable block telnet access (Enable/Disable)
telnet_port	telnet_port	Config user define telnet service allow port
ssh_allow	ssh_allow	Enable or disable block ssh access (Enable/Disable)
ssh_port	ssh_port	Config user define ssh service allow port
https_allow	https_allow	Enable or disable block HTTPS access (Enable/Disable)
https_port	https_port	Config user define HTTPS service allow port
user_define_ip	user_define_ip	Enable or disable user define allow IP address(Enable/Disable)

allow_ip1	allow_ip1	configure first allow IP for ex, 192.168.1.11/24
allow_ip2	allow_ip2	configure second allow IP for ex, 192.168.1.11/24
allow_ip3	allow_ip3	configure third allow IP for ex, 192.168.1.11/24
wan_ping_allow	wan_ping_allow	Allow ping from the WAN (Enable/Disable)
an_ping_allow	an_ping_allow	Allow ping from the LAN (Enable/Disable)

**Note:** [web\_allow web\_allow] the former web\_allow is command, and the latter is value. The value could reference the description below.

## 11.7 SNMP Setup

In **Vigor3900@config-sys#** , use the [snmpagent] command to configure SNMP and type the [get],[set] command to configure the details information.

**Vigor3900@config-sys#** snmpagent [get][set]

\*\*[get] Get SNMP Agent configuration

\*\*[set] Set SNMP Agent configuration

**example-**

**Vigor3900@config-sys#** snmpagent get

```
Vigor3900@config-sys# snmpagent get
status           : Disable
getcommunity    : public
setcommunity    : private
mgnip           : default
```

**Vigor3900@config-sys#** snmpagent set [status status] [getcommunity getcommunity] [setcommunity setcommunity] [mgnip mgnip]

Command	Command	DESCRIPTION
status	status	snmpagent status (Enable/Disable)
getcommunity	getcommunity	Get Community
setcommunity	setcommunity	Set Community
mgnip	mgnip	IP Range to management

**Note:** [status status] the former status is command, and the latter is value. The value could reference the description below.

## 11.8 Reboot system

In **Vigor3900@config-sys#** , use the [reboot] command to configure SNMP and type the [default] command to reboot to factory by default .

**Vigor3900@config-sys#** reboot [default]

\*\*[default] reboot to factory default [ ]



## 11.9 Fireware Upgrade

In **Vigor3900@config-sys#** , use the [firmware] command to configure firmware upgrade.

**Vigor3900@config-sys#** firmware [upgrade]

```
Vigor3900@config-sys# firmware upgrade
Firmware Update: Downloading image file from server.
Firmware Update: Download OK
Firmware Update: Firmware image not exist.
```

## 11.10 Connect to Fast Forward Conntrack

In **Vigor3900@config-sys#** , use the [cmm] command to configure Connect to Fast Forward Conntrack , then the screen will Entering character mode.

**Vigor3900@config-sys#** cmm  
cmm>